

Bryant University - Village Bathrooms and Sanitary Upgrades - Summer 2024  
1150 Douglas Pike, Smithfield, RI 02917

ID	Task Name	Duration	Start	Finish	Qtr 3, 2024 JulAugSep
0	Bryant University - Village Bathrooms and Sanitary Upgrades - Summer 2024	37.44 days	Wed 11/1/23	Fri 8/9/24	Bryant University - Village Bathrooms and Sanitary Upgrades - Summer 2024
1	Milestones	75.5 days	Mon 5/13/24	Fri 8/9/24	Milestones
7	Substantial Completion	0 days	Thu 8/1/24	Thu 8/1/24	8/1 ♦ Substantial Completion
4	Building 7 Completion	0 days	Fri 8/2/24	Fri 8/2/24	8/2 ♦ Building 7 Completion
5	Building 8 Completion	0 days	Mon 8/5/24	Mon 8/5/24	8/5 ♦ Building 8 Completion
6	Building 9 Completion	0 days	Wed 8/7/24	Wed 8/7/24	8/7 ♦ Building 9 Completion
8	Certificate of Occupancy	0 days	Thu 8/8/24	Thu 8/8/24	8/8 ♦ Certificate of Occupancy
9	FNLT Date = 8/17/24	0 days	Fri 8/9/24	Fri 8/9/24	8/9 ♦ FNLT Date = 8/17/24
193	Construction	75.5 days	Mon 5/13/24	Fri 8/9/24	Construction
194	Hall 7	72.56 days	Mon 5/13/24	Tue 8/6/24	Hall 7
384	Hall 8	69.69 days	Tue 5/14/24	Mon 8/5/24	Hall 8
422	Construction	61.63 days	Thu 5/23/24	Mon 8/5/24	Construction
423	Fourth Floor	54.56 days	Thu 5/23/24	Sat 7/27/24	Fourth Floor
453	Install Vanity Mirrors	1 day	Thu 7/25/24	Fri 7/26/24	7/25 ■ Install Vanity Mirrors
454	Caulking	1 day	Thu 7/25/24	Fri 7/26/24	7/25 ■ Caulking
455	Final Paint	2 days	Thu 7/25/24	Sat 7/27/24	7/25 ■ Final Paint
457	3rd floor	53.31 days	Sat 5/25/24	Sat 7/27/24	3rd floor
489	Final Paint	2 days	Thu 7/25/24	Sat 7/27/24	7/25 ■ Final Paint
491	2nd floor	52.5 days	Sat 5/25/24	Sat 7/27/24	2nd floor
523	Final Paint	2 days	Thu 7/25/24	Sat 7/27/24	7/25 ■ Final Paint
525	1st Floor	47.25 days	Tue 6/4/24	Mon 7/29/24	1st Floor
561	Install Vanity Mirrors	1 day	Thu 7/25/24	Fri 7/26/24	7/25 ■ Install Vanity Mirrors
562	Caulking	1 day	Fri 7/26/24	Sat 7/27/24	7/26 ■ Caulking
563	Final Paint	1 day	Sat 7/27/24	Mon 7/29/24	7/27 ■ Final Paint
566	Full building close-out	15.94 days	Thu 7/18/24	Mon 8/5/24	7/18 ■ Full building close-out



Bryant University - Village Bathrooms and Sanitary Upgrades - Summer 2024  
1150 Douglas Pike, Smithfield, RI 02917



ID	Task Name	Duration	Start	Finish	Jul	Qtr 3, 2024 Aug	Sep
570	Final Cleaning (Repositioning furniture, Bryant Final Cleaning Chec	3 days	Thu 8/1/24	Mon 8/5/24		8/1 Final Cleaning (Repositioning furniture, Bryant Final Cleaning Check List, Demo Protection)	
571	100% NFPA-72 Fire Alarm Testing	1 day	Sat 8/3/24	Mon 8/5/24		8/3 100% NFPA-72 Fire Alarm Testing	
233	Construction	66.75 days	Sat 5/18/24	Tue 8/6/24			Construction
234	Fourth Floor	66.75 days	Sat 5/18/24	Tue 8/6/24			Fourth Floor
265	Install Vanity Mirrors	1 day	Thu 7/25/24	Fri 7/26/24		7/25 Install Vanity Mirrors	
266	Caulking	1 day	Thu 7/25/24	Fri 7/26/24		7/25 Caulking	
267	Final Paint	9.13 days	Fri 7/26/24	Tue 8/6/24		7/26 Final Paint	
269	Third Floor	56.56 days	Tue 5/21/24	Sat 7/27/24			Third Floor
301	Final Paint	2 days	Thu 7/25/24	Sat 7/27/24		7/25 Final Paint	
303	2nd Floor	55.56 days	Wed 5/22/24	Sat 7/27/24			2nd Floor
335	Final Paint	2 days	Thu 7/25/24	Sat 7/27/24		7/25 Final Paint	
337	First Floor	51.25 days	Sat 6/1/24	Wed 7/31/24			First Floor
372	Install Carpet & Resilient Flooring	3 days	Tue 7/23/24	Fri 7/26/24		7/23 Install Carpet & Resilient Flooring	
373	Install Vanity Mirrors	1 day	Thu 7/25/24	Fri 7/26/24		7/25 Install Vanity Mirrors	
374	Caulking	1 day	Fri 7/26/24	Sat 7/27/24		7/26 Caulking	
375	Final Paint	1 day	Sat 7/27/24	Mon 7/29/24		7/27 Final Paint	
377	Electrical Finish	1 day	Mon 7/29/24	Tue 7/30/24		7/29 Electrical Finish	
378	Install Steel Angles at Laundry Room	1 day	Tue 7/30/24	Wed 7/31/24		7/30 Install Steel Angles at Laundry Room	
379	Full building close-out	13.94 days	Thu 7/18/24	Fri 8/2/24	7/18		Full building close-out
383	100% NFPA-72 Fire Alarm Testing	2 days	Mon 7/29/24	Wed 7/31/24		7/29 100% NFPA-72 Fire Alarm Testing	
382	Final Cleaning (Repositioning furniture, Bryant Final Cleaning Check List,	1 day	Thu 8/1/24	Fri 8/2/24		8/1 Final Cleaning (Repositioning furniture, Bryant Final Cleaning Check List, Remove All Temp. Protection)	
572	Hall 9 (STAND ALONE)	72.69 days	Tue 5/14/24	Thu 8/8/24			Hall 9 (STAND ALONE)
609	Construction	66.69 days	Thu 5/16/24	Sat 8/3/24			Construction
610	Fourth Floor	59.63 days	Thu 5/16/24	Fri 7/26/24			Fourth Floor
642	Final Paint	2 days	Wed 7/24/24	Fri 7/26/24		7/24 Final Paint	

Bryant University - Village Bathrooms and Sanitary Upgrades - Summer 2024  
1150 Douglas Pike, Smithfield, RI 02917

ID	Task Name	Duration	Start	Finish	Jul	Qtr 3, 2024 Aug	Sep
644	3rd floor	54.56 days	Wed 5/22/24	Fri 7/26/24	3rd floor		
676	Final Paint	2 days	Wed 7/24/24	Fri 7/26/24	7/24	Final Paint	
678	2nd floor	54.38 days	Thu 5/23/24	Fri 7/26/24	2nd floor		
710	Final Paint	2 days	Wed 7/24/24	Fri 7/26/24	7/24	Final Paint	
712	1st Floor	52.31 days	Tue 6/4/24	Sat 8/3/24	1st Floor		
747	Install Carpet& Resilient Flooring	5 days	Thu 7/25/24	Wed 7/31/24	7/25	Install Carpet& Resilient Flooring	
748	Install Vanity Mirrors	1 day	Wed 7/31/24	Thu 8/1/24	7/31	Install Vanity Mirrors	
751	Reinstallation& Final Connections of Water Storage Tanks (Filling & T	1 day	Wed 7/31/24	Thu 8/1/24	7/31	Reinstallation& Final Connections of Water Storage Tanks (Filling & Testing)	
753	Install Steel Angles at Laundry Room	1 day	Wed 7/31/24	Thu 8/1/24	7/31	Install Steel Angles at Laundry Room	
749	Caulking	1 day	Thu 8/1/24	Fri 8/2/24	8/1	Caulking	
750	Final Paint	0.06 days	Fri 8/2/24	Fri 8/2/24	8/2	Final Paint	
752	Electrical Finish	1 day	Fri 8/2/24	Sat 8/3/24	8/2	Electrical Finish	
754	Full building close-out	18.94 days	Thu 7/18/24	Thu 8/8/24	7/18	Full building close-out	
757	Final Cleaning (Repositioning furniture, Bryant Final Cleaning Check List,	3 days	Sat 8/3/24	Wed 8/7/24	8/3	Final Cleaning (Repositioning furniture, Bryant Final Cleaning Check List, Demo Protection)	
758	100% NFPA-72 Fire Alarm Testing	1 day	Wed 8/7/24	Thu 8/8/24	8/7	100% NFPA-72 Fire Alarm Testing	
759	Sitework	69.63 days	Sat 5/18/24	Fri 8/9/24	Sitework		
794	Final Inspections	15.88 days	Tue 7/23/24	Fri 8/9/24	7/23	Final Inspections	
795	Punchlist NEC	5 days	Tue 7/23/24	Sat 7/27/24	7/23	Punchlist NEC	
796	Punchlist Design Team	5 days	Sat 7/27/24	Fri 8/2/24	7/27	Punchlist Design Team	
798	Plumbing Affidavit from design team	1 day	Thu 8/1/24	Fri 8/2/24	8/1	Plumbing Affidavit from design team	
797	Substantial Completion	1 day	Thu 8/1/24	Fri 8/2/24	8/1	Substantial Completion	
800	Architectural Affidavit from design team	1 day	Fri 8/2/24	Sat 8/3/24	8/2	Architectural Affidavit from design team	
799	Electrical Affidavit from design team	1 day	Sat 8/3/24	Mon 8/5/24	8/3	Electrical Affidavit from design team	
801	Fire Dept. Final	1 day	Thu 8/8/24	Fri 8/9/24	8/8	Fire Dept. Final	
802	Building Dept. Final	1 day	Thu 8/8/24	Fri 8/9/24	8/8	Building Dept. Final	



Bryant University - Village Bathrooms and Sanitary Upgrades - Summer 2024  
1150 Douglas Pike, Smithfield, RI 02917



ID	Task Name	Duration	Start	Finish	Qtr 3, 2024		
					Jul	Aug	Sep
803	Certificate of Occupancy	1 day	Thu 8/8/24	Fri 8/9/24		8/8 <span>■</span> Certificate of Occupancy	
804	Project Completion	1 day	Thu 8/8/24	Fri 8/9/24		8/8 <span>■</span> Project Completion	



**Bryant University**  
1150 Douglas Pike  
Smithfield, RI

1 10/30/23 Logistics Plan

MARK: DATE: DESCRIPTION:  
ISSUE LOG

△ = CLOUDED  
CHANGE

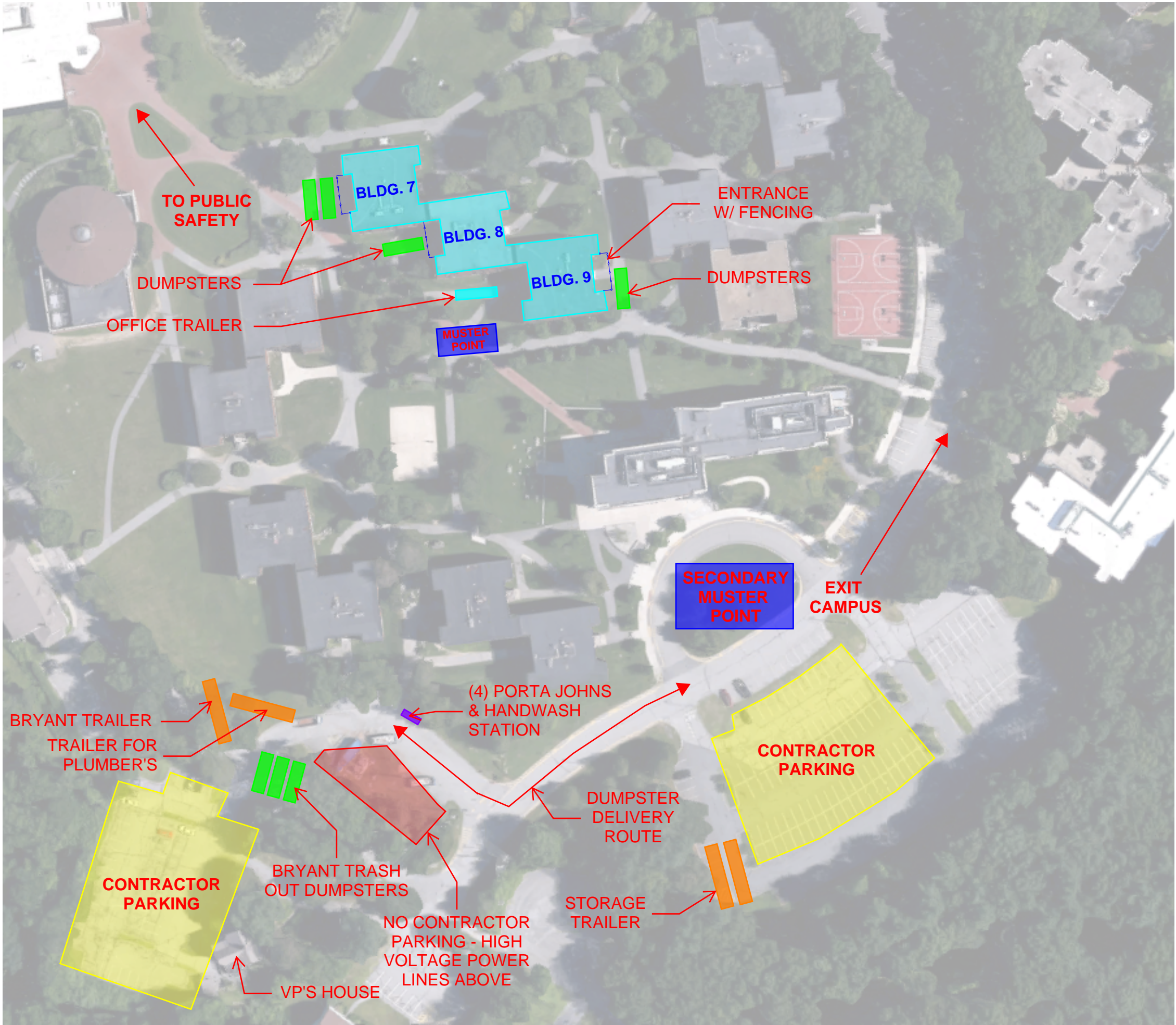
SCALE \_\_\_\_\_ NTS

DRAWN BY Mallory Silvia

© NEW ENGLAND CONSTRUCTION, 2022

# OVERALL SITE LOGISTICS PLAN

## SLP-1.0



## Inspections

### Division 2 Drainage Structures

#	Description	Status	Inspection Date	Due Date	Location	Assignees	Responsible Contractor	Signers	Closed By	Date Closed	Items Inspected	✓	✗	●	N/A	Closed Observations	Type	Trade	Spec Section
1	Quality Control Checklist for Catch Basin/ Drain Manhole Installation...hall 8 sewer line install	Closed	05/30/24	06/01/24	Hall 8	Chris Malles			Chris Malles	06/05/24	13/13	4/13	1/13	6/13	2/13	0/0	Quality		

### Division 2 Sitework Pre Paving/ Sidewalk Placement Checklist

#	Description	Status	Inspection Date	Due Date	Location	Assignees	Responsible Contractor	Signers	Closed By	Date Closed	Items Inspected	✓	✗	●	N/A	Closed Observations	Type	Trade	Spec Section
1	Division 2 Sitework Bench Mark Template for Items Deemed Critical By SSQAQCP Project Team for Paving. Back of hall 7 from sewer	Closed	06/11/24	06/11/24	Hall 8	Chris Malles Sophia Fiore			Chris Malles	06/12/24	18/18	3/18	0/18	3/18	12/18	0/0	Quality		

### Division 22 Underground Plumbing Checklist

#	Description	Status	Inspection Date	Due Date	Location	Assignees	Responsible Contractor	Signers	Closed By	Date Closed	Items Inspected	✓	✗	●	N/A	Closed Observations	Type	Trade	Spec Section
3	QAQC Checklist for underground plumbing installation.	Closed	06/20/24		Hall 9	Sophia Fiore	Southern Mechanical - Energy One		Sophia Fiore	06/20/24	29/29	10/29	0/29	2/29	17/29	0/0	Quality		
2	QAQC Checklist for underground plumbing installation.hall 8 sewer and storm	Closed	06/11/24	06/11/24	Hall 8	Sophia Fiore			Chris Malles	06/14/24	29/29	11/29	0/29	2/29	16/29	0/0	Quality		
1	QAQC Checklist for underground plumbing installation. Cryan underground plumbing sewer tying into existing sewer manhole.	Closed	05/30/24	06/01/24	Hall 9	Chris Malles			Chris Malles	06/03/24	28/29	7/29	0/29	1/29	20/29	0/0	Quality		

### Division 3 Concrete Placement Inspection

#	Description	Status	Inspection Date	Due Date	Location	Assignees	Responsible Contractor	Signers	Closed By	Date Closed	Items Inspected	✓	✗	●	N/A	Closed Observations	Type	Trade	Spec Section
3	Inspection Template Prior	Closed	06/25/24		Hall 9	Sophia Fiore			Sophia Fiore	07/01/24	25/25	8/25	0/25	3/25	14/	0/0	Quality		



#	Description	Status	Inspection Date	Due Date	Location	Assignees	Responsible Contractor	Signers	Closed By	Date Closed	Items Inspected	✓	✗	●	N/A	Closed Observations	Type	Trade	Spec Section
	to Concrete Placement														25				
2	Inspection Template Prior to Concrete Placement-7	Closed	06/20/24		Hall 7	Sophia Fiore			Sophia Fiore	06/26/24	25/25	8/25	0/25	2/25	15/25	0/0	Quality		
1	Inspection Template Prior to Concrete Placement hall 8 slab pour	Closed	06/13/24	06/14/24	Hall 8	Sophia Fiore			Sophia Fiore	06/14/24	25/25	8/25	0/25	3/25	14/25	0/0	Quality		

## Division 6 Framing Inspection Checklist

#	Description	Status	Inspection Date	Due Date	Location	Assignees	Responsible Contractor	Signers	Closed By	Date Closed	Items Inspected	✓	✗	●	N/A	Closed Observations	Type	Trade	Spec Section
11	QAQC Framing Inspection Checklist hall 8 410	Closed	06/05/24	06/05/24	Hall 8	Chris Malles			Chris Malles	06/12/24	6/16	3/16	1/16	0/16	2/16	0/0	Quality		
10	QAQC Framing Inspection Checklist hall 9 210	Closed	06/03/24	06/03/24	Hall 9	Chris Malles			Chris Malles	06/05/24	16/16	11/16	1/16	0/16	4/16	0/0	Quality		
9	QAQC Framing Inspection Checklist hall 7 230	Closed	06/03/24	06/03/24	Hall 7	Chris Malles			Chris Malles	06/03/24	16/16	11/16	1/16	0/16	4/16	0/0	Quality		
8	QAQC Framing Inspection Checklist hall 7 220	Closed	06/03/24	06/03/24	Hall 7	Chris Malles			Chris Malles	06/03/24	16/16	12/16	0/16	0/16	4/16	0/0	Quality		
7	QAQC Framing Inspection Checklist hall 7 240	Closed	06/03/24	06/03/24	Hall 7	Chris Malles			Chris Malles	06/03/24	16/16	11/16	1/16	0/16	4/16	0/0	Quality		
6	QAQC Framing Inspection Checklist hall 7 210	Closed	06/03/24	06/03/24	Hall 7	Chris Malles			Chris Malles	06/03/24	16/16	12/16	0/16	0/16	4/16	0/0	Quality		
5	QAQC Framing Inspection Checklist hall 7 310	Closed	06/03/24	06/03/24	Hall 7	Chris Malles			Chris Malles	06/03/24	16/16	12/16	0/16	0/16	4/16	0/0	Quality		
4	QAQC Framing Inspection Checklist hall 7 320	Closed	06/03/24	06/03/24	Hall 7	Chris Malles			Chris Malles	06/03/24	16/16	12/16	0/16	0/16	4/16	0/0	Quality		
3	QAQC Framing Inspection Checklist hall 7 430	Closed	05/31/24		Hall 7	Chris Malles			Chris Malles	06/03/24	16/16	13/16	0/16	0/16	3/16	0/0	Quality		
2	QAQC Framing Inspection Checklist hall 7 440	Closed	05/31/24		Hall 7	Chris Malles			Chris Malles	05/31/24	15/16	11/16	2/16	0/16	2/16	0/0	Quality		
1	QAQC Framing Inspection Checklist Hall 7 4th floor 410	Closed	05/31/24		Hall 7	Chris Malles			Chris Malles	05/31/24	16/16	13/16	0/16	0/16	3/16	0/0	Quality		

## Division 9 Drywall Installation

#	Description	Status	Inspection Date	Due Date	Location	Assignees	Responsible Contractor	Signers	Closed By	Date Closed	Items Inspected	✓	✗	●	N/A	Closed Observations	Type	Trade	Spec Section
1	Quality Assurance Quality Control Checklist for Drywall Installation Hall 7 4th floor	Open	06/03/24	06/03/24	Hall 7	Chris Malles					11/14	7/14	0/14	0/14	4/14	0/0	Quality		

## Division 9 Tile Installation Checklist

#	Description	Status	Inspection Date	Due Date	Location	Assignees	Responsible Contractor	Signers	Closed By	Date Closed	Items Inspected	✓	✗	●	N/A	Closed Observations	Type	Trade	Spec Section
43	Tile Installation Checklist-131	Closed	07/15/24		Hall 8	Sophia Fiore			Sophia Fiore	07/15/24	17/18	13/18	1/18	3/18	0/18	0/0	Quality		
42	Tile Installation Checklist-120	Closed	07/15/24		Hall 8	Sophia Fiore			Sophia Fiore	07/15/24	18/18	13/18	1/18	4/18	0/18	0/0	Quality		
41	Tile Installation Checklist-140	Closed	07/15/24		Hall 8	Sophia Fiore			Sophia Fiore	07/15/24	18/18	13/18	1/18	4/18	0/18	0/0	Quality		
40	Tile Installation Checklist-110	Closed	07/15/24		Hall 8	Sophia Fiore			Sophia Fiore	07/15/24	18/18	13/18	1/18	4/18	0/18	0/0	Quality		
39	Tile Installation Checklist-140	Closed	07/15/24		Hall 7	Sophia Fiore			Sophia Fiore	07/16/24	18/18	13/18	1/18	4/18	0/18	0/0	Quality		
38	Tile Installation Checklist-131	Closed	07/15/24		Hall 7	Sophia Fiore			Sophia Fiore	07/16/24	18/18	13/18	1/18	4/18	0/18	0/0	Quality		
37	Tile Installation Checklist-120	Closed	07/15/24		Hall 7	Sophia Fiore			Sophia Fiore	07/16/24	18/18	13/18	1/18	4/18	0/18	0/0	Quality		
36	Tile Installation Checklist-110	Closed	07/15/24		Hall 7	Sophia Fiore			Sophia Fiore	07/17/24	18/18	14/18	0/18	4/18	0/18	0/0	Quality		
35	Tile Installation Checklist-120	Open	07/09/24		Hall 8	Sophia Fiore					13/18	9/18	0/18	4/18	0/18	0/0	Quality		
34	Tile Installation Checklist-110	Open	07/09/24		Hall 8	Sophia Fiore					9/18	9/18	0/18	0/18	0/18	0/0	Quality		
33	Tile Installation Checklist-220	Closed	06/26/24		Hall 8	Sophia Fiore			Sophia Fiore	07/01/24	18/18	14/18	0/18	4/18	0/18	0/0	Quality		
32	Tile Installation Checklist-330	Closed	06/26/24		Hall 8	Sophia Fiore			Sophia Fiore	07/01/24	17/18	14/18	0/18	3/18	0/18	0/0	Quality		
31	Tile Installation Checklist-340	Closed	06/26/24		Hall 8	Sophia Fiore			Sophia Fiore	06/28/24	18/18	14/18	0/18	4/18	0/18	0/0	Quality		
30	Tile Installation Checklist-310	Closed	06/26/24		Hall 8	Sophia Fiore			Sophia Fiore	06/28/24	18/18	14/18	0/18	4/18	0/18	0/0	Quality		
29	Tile Installation Checklist-320	Closed	06/24/24		Hall 8	Sophia Fiore			Sophia Fiore	07/01/24	18/18	14/18	0/18	4/18	0/18	0/0	Quality		
28	Tile Installation Checklist-420	Closed	06/24/24		Hall 8	Sophia Fiore			Sophia Fiore	06/28/24	18/18	14/18	0/18	4/18	0/18	0/0	Quality		
27	Tile Installation Checklist-440	Closed	06/24/24		Hall 8	Sophia Fiore			Sophia Fiore	06/28/24	18/18	14/18	0/18	4/18	0/18	0/0	Quality		
26	Tile Installation Checklist-410	Closed	06/24/24		Hall 8	Sophia Fiore			Sophia Fiore	06/28/24	18/18	14/18	0/18	4/18	0/18	0/0	Quality		
25	Tile Installation Checklist-room 210	Closed	06/17/24		Hall 9	Sophia Fiore			Sophia Fiore	06/24/24	17/18	14/18	0/18	3/18	0/18	0/0	Quality		
24	Tile Installation Checklist-room 240	Closed	06/17/24		Hall 9	Sophia Fiore			Sophia Fiore	06/24/24	18/18	14/18	0/18	4/18	0/18	0/0	Quality		



#	Description	Status	Inspection Date	Due Date	Location	Assignees	Responsible Contractor	Signers	Closed By	Date Closed	Items Inspected	✓	✗	●	N/A	Closed Observations	Type	Trade	Spec Section
23	Tile Installation Checklist-room 230	Closed	06/17/24		Hall 9	Sophia Fiore			Sophia Fiore	06/24/24	17/18	13/18	1/18	3/18	0/18	0/0	Quality		
22	Tile Installation Checklist-room 220	Closed	06/17/24		Hall 9	Sophia Fiore			Sophia Fiore	06/24/24	18/18	14/18	0/18	4/18	0/18	0/0	Quality		
21	Tile Installation Checklist-room 330	Closed	06/17/24		Hall 9	Sophia Fiore			Sophia Fiore	06/19/24	18/18	14/18	0/18	4/18	0/18	0/0	Quality		
20	Tile Installation Checklist-320	Closed	06/17/24		Hall 9	Sophia Fiore			Sophia Fiore	06/24/24	14/18	14/18	0/18	0/18	0/18	0/0	Quality		
19	Tile Installation Checklist-room 340	Closed	06/17/24		Hall 9	Sophia Fiore			Sophia Fiore	06/19/24	17/18	12/18	2/18	3/18	0/18	0/0	Quality		
18	Tile Installation Checklist-room 310	Closed	06/17/24		Hall 9	Sophia Fiore			Sophia Fiore	06/19/24	17/18	13/18	1/18	3/18	0/18	0/0	Quality		
17	Tile Installation Checklist-room 430	Closed	06/17/24		Hall 9	Sophia Fiore			Sophia Fiore	06/18/24	18/18	14/18	0/18	4/18	0/18	0/0	Quality		
16	Tile Installation Checklist-room 420	Closed	06/17/24		Hall 9	Sophia Fiore			Sophia Fiore	06/18/24	18/18	14/18	0/18	4/18	0/18	0/0	Quality		
15	Tile Installation Checklist-room 440	Closed	06/17/24		Hall 9	Sophia Fiore			Sophia Fiore	06/24/24	18/18	14/18	0/18	4/18	0/18	0/0	Quality		
14	Tile Installation Checklist-room 410	Closed	06/17/24		Hall 9	Sophia Fiore			Sophia Fiore	06/18/24	18/18	14/18	0/18	4/18	0/18	0/0	Quality		
13	Tile Installation Checklist-room 210	Closed	06/17/24		Hall 7	Sophia Fiore			Sophia Fiore	06/24/24	18/18	12/18	2/18	4/18	0/18	0/0	Quality		
12	Tile Installation Checklist-room 220	Closed	06/17/24		Hall 7	Sophia Fiore			Sophia Fiore	06/24/24	18/18	13/18	1/18	4/18	0/18	0/0	Quality		
11	Tile Installation Checklist-room 230	Closed	06/17/24		Hall 7	Sophia Fiore			Sophia Fiore	06/24/24	18/18	14/18	0/18	4/18	0/18	0/0	Quality		
10	Tile Installation Checklist-room 240	Closed	06/17/24		Hall 7	Sophia Fiore			Sophia Fiore	06/24/24	18/18	13/18	1/18	4/18	0/18	0/0	Quality		
9	Tile Installation Checklist-room 340	Closed	06/17/24		Hall 7	Sophia Fiore			Sophia Fiore	06/24/24	17/18	13/18	1/18	3/18	0/18	0/0	Quality		
8	Tile Installation Checklist-room 310	Closed	06/17/24		Hall 7	Sophia Fiore			Sophia Fiore	06/26/24	18/18	14/18	0/18	4/18	0/18	0/0	Quality		
7	Tile Installation Checklist-room 330	Closed	06/17/24		Hall 7	Sophia Fiore			Sophia Fiore	06/24/24	18/18	13/18	1/18	4/18	0/18	0/0	Quality		
6	Tile Installation Checklist-room 320	Closed	06/17/24		Hall 7	Sophia Fiore			Sophia Fiore	06/24/24	18/18	12/18	2/18	4/18	0/18	0/0	Quality		
5	Tile Installation Checklist-room 420	Closed	06/17/24		Hall 7	Sophia Fiore			Sophia Fiore	06/24/24	18/18	14/18	0/18	4/18	0/18	0/0	Quality		
4	Tile Installation Checklist-room 430	Closed	06/17/24		Hall 7	Sophia Fiore			Sophia Fiore	06/24/24	18/18	14/18	0/18	4/18	0/18	0/0	Quality		
3	Tile Installation Checklist-Room 440	Closed	06/17/24		Hall 7	Sophia Fiore			Sophia Fiore	06/24/24	18/18	14/18	0/18	4/18	0/18	0/0	Quality		

#	Description	Status	Inspection Date	Due Date	Location	Assignees	Responsible Contractor	Signers	Closed By	Date Closed	Items Inspected	✓	✗	●	N/A	Closed Observations	Type	Trade	Spec Section
2	Tile Installation Checklist-room 410	Closed	06/17/24	06/18/24	Hall 7	Sophia Fiore			Sophia Fiore	06/24/24	18/18	14/18	0/18	4/18	0/18	0/0	Quality		
1	Tile Installation Checklist Hall 9 room 440	Closed	06/12/24		Hall 9	Chris Malles Sophia Fiore	New England Construction Co., Inc.		Sophia Fiore	06/18/24	18/18	14/18	0/18	4/18	0/18	0/0	Quality		

## Material Receiving Report Template

#	Description	Status	Inspection Date	Due Date	Location	Assignees	Responsible Contractor	Signers	Closed By	Date Closed	Items Inspected	✓	✗	●	N/A	Closed Observations	Type	Trade	Spec Section
6	Material Inspection as they arrive to site for building 9 toilets	Closed	06/20/24		Hall 9	Sophia Fiore			Sophia Fiore	06/20/24	5/5	2/5	0/5	3/5	0/5	0/0	Quality		
5	Material Inspection as they arrive to site for building 8 toilets	Closed	06/20/24		Hall 8	Sophia Fiore			Sophia Fiore	06/20/24	5/5	2/5	0/5	3/5	0/5	0/0	Quality		
4	Material Inspection as they arrive to site for building 7 toilets	Closed	06/20/24			Sophia Fiore			Sophia Fiore	06/20/24	5/5	2/5	0/5	3/5	0/5	0/0	Quality		
3	Shower	Closed	06/13/24			Sophia Fiore			Sophia Fiore	06/13/24	5/5	2/5	0/5	3/5	0/5	0/0	Quality		
2	Shower seats	Closed	06/06/24	06/06/24		Sophia Fiore			Sophia Fiore	06/07/24	5/5	2/5	0/5	3/5	0/5	0/0	Quality		
1	One piece shower	Closed	06/06/24	06/06/24		Sophia Fiore			Sophia Fiore	06/07/24	5/5	2/5	0/5	3/5	0/5	0/0	Quality		

## Pre-Drywall Milestone Inspection

#	Description	Status	Inspection Date	Due Date	Location	Assignees	Responsible Contractor	Signers	Closed By	Date Closed	Items Inspected	✓	✗	●	N/A	Closed Observations	Type	Trade	Spec Section
29	Pre Drywall Quality Control Inspection- 120	Closed	06/26/24		Hall 8	Sophia Fiore			Chris Malles	06/28/24	42/44	12/44	0/44	1/44	29/44	0/0	Quality		
28	Pre Drywall Quality Control Inspection-110	Closed	06/26/24		Hall 8	Sophia Fiore			Chris Malles	06/28/24	42/44	12/44	0/44	1/44	29/44	0/0	Quality		
27	Pre Drywall Quality Control Inspection	Open	06/26/24		Hall 7	Sophia Fiore					41/44	12/44	0/44	0/44	29/44	0/0	Quality		
26	Pre Drywall Quality Control Inspection- floor 1 suite 110	Open	06/26/24		Hall 7	Sophia Fiore					33/44	12/44	0/44	0/44	21/44	0/0	Quality		
25	Pre Drywall Quality Control Inspection-230	Closed	06/10/24		Hall 7	Sophia Fiore			Sophia Fiore	06/10/24	42/44	11/44	1/44	0/44	30/44	0/0	Quality		
24	Pre Drywall Quality Control Inspection-220	Closed	06/10/24		Hall 7	Sophia Fiore			Sophia Fiore	06/10/24	42/44	11/44	1/44	0/44	30/44	0/0	Quality		
23	Pre Drywall Quality Control Inspection-240	Closed	06/10/24		Hall 7	Sophia Fiore			Sophia Fiore	06/10/24	42/44	12/44	0/44	0/44	30/44	0/0	Quality		
22	Pre Drywall Quality Control Inspection- Room	Closed	06/10/24		Hall 7	Sophia Fiore			Sophia Fiore	06/10/24	42/44	11/44	1/44	0/44	30/44	0/0	Quality		

#	Description	Status	Inspection Date	Due Date	Location	Assignees	Responsible Contractor	Signers	Closed By	Date Closed	Items Inspected	✓	×	●	N/A	Closed Observations	Type	Trade	Spec Section
	210																		
21	Pre Drywall Quality Control Inspection- Room 310	Closed	06/10/24		Hall 7	Sophia Fiore			Sophia Fiore	06/10/24	42/44	11/44	1/44	0/44	30/44	0/0	Quality		
20	Pre Drywall Quality Control Inspection- Room 340	Closed	06/10/24		Hall 7	Sophia Fiore			Sophia Fiore	06/10/24	42/44	12/44	0/44	0/44	30/44	0/0	Quality		
19	Pre Drywall Quality Control Inspection- Room 330	Closed	06/10/24		Hall 7	Sophia Fiore			Sophia Fiore	06/10/24	42/44	12/44	0/44	0/44	30/44	0/0	Quality		
18	Pre Drywall Quality Control Inspection- Room 320	Closed	06/10/24		Hall 7	Sophia Fiore			Sophia Fiore	06/10/24	42/44	11/44	1/44	0/44	30/44	0/0	Quality		
17	Pre Drywall Quality Control Inspection- Room 430	Closed	06/10/24		Hall 7	Sophia Fiore			Sophia Fiore	06/10/24	42/44	11/44	1/44	0/44	30/44	0/0	Quality		
16	Pre Drywall Quality Control Inspection- Room 420	Closed	06/10/24		Hall 7	Sophia Fiore			Sophia Fiore	06/10/24	19/44	11/44	1/44	0/44	7/44	0/0	Quality		
15	Pre Drywall Quality Control Inspection- Room 440	Closed	06/10/24		Hall 7	Sophia Fiore			Sophia Fiore	06/10/24	42/44	11/44	1/44	0/44	30/44	0/0	Quality		
14	Pre Drywall Quality Control Inspection-Room 410	Closed	06/10/24		Hall 7	Sophia Fiore			Sophia Fiore	06/10/24	19/44	12/44	0/44	0/44	7/44	0/0	Quality		
13	Pre Drywall Quality Control Inspection- Room 230	Closed	06/10/24		Hall 8	Sophia Fiore			Sophia Fiore	06/10/24	42/44	9/44	3/44	0/44	30/44	0/0	Quality		
12	Pre Drywall Quality Control Inspection- Room 220	Closed	06/10/24		Hall 8	Sophia Fiore			Sophia Fiore	06/10/24	42/44	8/44	4/44	0/44	30/44	0/0	Quality		
11	Pre Drywall Quality Control Inspection- Room 210	Closed	06/10/24	06/10/24	Hall 8	Sophia Fiore			Sophia Fiore	06/10/24	42/44	8/44	4/44	0/44	30/44	0/0	Quality		
10	Pre Drywall Quality Control Inspection- Room 240	Closed	06/10/24		Hall 8	Sophia Fiore			Sophia Fiore	06/10/24	42/44	8/44	4/44	0/44	30/44	0/0	Quality		
9	Pre Drywall Quality Control Inspection- Room 310	Closed	06/10/24		Hall 8	Sophia Fiore			Sophia Fiore	06/10/24	42/44	8/44	4/44	0/44	30/44	0/0	Quality		
8	Pre Drywall Quality Control Inspection- Room 340	Closed	06/10/24		Hall 8	Sophia Fiore			Sophia Fiore	06/10/24	42/44	9/44	3/44	0/44	30/44	0/0	Quality		
7	Pre Drywall Quality Control Inspection- Room	Closed	06/10/24		Hall 8	Sophia Fiore			Sophia Fiore	06/10/24	42/44	8/44	4/44	0/44	30/44	0/0	Quality		

#	Description	Status	Inspection Date	Due Date	Location	Assignees	Responsible Contractor	Signers	Closed By	Date Closed	Items Inspected	✓	✗	●	N/A	Closed Observations	Type	Trade	Spec Section
	330																		
6	Pre Drywall Quality Control Inspection- Room 320	Closed	06/10/24		Hall 8	Sophia Fiore			Sophia Fiore	06/10/24	42/44	8/44	4/44	0/44	30/44	0/0	Quality		
5	Pre Drywall Quality Control Inspection- Room 420	Closed	06/10/24		Hall 8	Sophia Fiore			Sophia Fiore	06/10/24	42/44	10/44	2/44	0/44	30/44	0/0	Quality		
4	Pre Drywall Quality Control Inspection Room 430	Closed	06/10/24		Hall 8	Sophia Fiore			Sophia Fiore	06/10/24	42/44	9/44	3/44	0/44	30/44	0/0	Quality		
3	Pre Drywall Quality Control Inspection room 410	Closed	06/10/24		Hall 8	Sophia Fiore			Sophia Fiore	06/10/24	19/44	10/44	2/44	0/44	7/44	0/0	Quality		
2	Pre Drywall Quality Control Inspection Room 440	Closed	06/10/24		Hall 8	Sophia Fiore			Sophia Fiore	06/10/24	42/44	10/44	2/44	0/44	30/44	0/0	Quality		
1	Pre Drywall Quality Control Inspection	Closed	05/16/24			John Preston			Chris Malles	06/06/24	8/44	0/44	0/44	0/44	8/44	0/0	Quality		

## Safety Department Site Safety Inspection

#	Description	Status	Inspection Date	Due Date	Location	Assignees	Responsible Contractor	Signers	Closed By	Date Closed	Items Inspected	✓	✗	●	N/A	Closed Observations	Type	Trade	Spec Section
2	Safety Department Site Safety Inspections- 7/1	Closed	07/02/24		7/8/9	Sophia Fiore			Sophia Fiore	07/02/24	0/80	0/80	0/80	0/80	0/80	0/0	Safety		
1	Safety Department Site Safety Inspection 6.6.24	Open	06/06/24	06/13/24	7/8/9	Joe Teixeira	New England Construction Co., Inc.				79/80	39/80	8/80	0/80	32/80	0/0	Safety		

## Safety Inspection Report

#	Description	Status	Inspection Date	Due Date	Location	Assignees	Responsible Contractor	Signers	Closed By	Date Closed	Items Inspected	✓	✗	●	N/A	Closed Observations	Type	Trade	Spec Section
25	Weekly Safety Inspection Report 8/5/24 Malles	Closed	08/07/24	08/09/24	7/8/9	Chris Malles	New England Construction Co., Inc.		Chris Malles	08/09/24	19/19	13/19	1/19	0/19	5/19	0/0	Safety		
24	Weekly Safety Inspection Report- 8/9	Closed	08/10/24		7/8/9	Sophia Fiore			Sophia Fiore	08/09/24	18/19	11/19	1/19	0/19	6/19	0/0	Safety		
23	Weekly Safety Inspection Report- 8/2	Closed	08/02/24		7/8/9	Sophia Fiore			Sophia Fiore	08/02/24	19/19	12/19	1/19	0/19	6/19	0/0	Safety		
22	Weekly Safety Inspection Report	Closed	07/25/24			Corey Riendeau			Corey Riendeau	07/25/24	19/19	15/19	0/19	0/19	4/19	0/0	Safety		
21	Weekly Safety Inspection Report- 7/26	Closed	07/24/24	07/26/24	7/8/9	Sophia Fiore			Sophia Fiore	07/26/24	19/19	11/19	1/19	0/19	7/19	0/0	Safety		

#	Description	Status	Inspection Date	Due Date	Location	Assignees	Responsible Contractor	Signers	Closed By	Date Closed	Items Inspected	✓	✗	●	N/A	Closed Observations	Type	Trade	Spec Section
20	Weekly Safety Inspection Report 7/22/24 Malles	Closed	07/23/24	07/26/24	7/8/9	Chris Malles	New England Construction Co., Inc.		Chris Malles	07/24/24	19/19	9/19	4/19	0/19	6/19	0/0	Safety		
19	Weekly Safety Inspection Report- 7/14	Closed	07/17/24	07/19/24	7/8/9	Sophia Fiore			Sophia Fiore	07/19/24	19/19	13/19	0/19	0/19	6/19	0/0	Safety		
18	Weekly Safety Inspection Report- 7/8/24	Closed	07/11/24		7/8/9	Sophia Fiore			Sophia Fiore	07/11/24	19/19	11/19	2/19	0/19	6/19	0/0	Safety		
17	Weekly Safety Inspection Report 7/8/24 Malles	Closed	07/10/24	07/12/24	7/8/9	Chris Malles			Chris Malles	07/12/24	19/19	11/19	3/19	0/19	5/19	0/0	Safety		
16	Weekly Safety Inspection Report- 7/1	Closed	07/02/24		7/8/9	Sophia Fiore			Sophia Fiore	07/03/24	19/19	13/19	0/19	0/19	6/19	0/0	Safety		
15	Weekly Safety Inspection Report- week 6/25	Closed	06/28/24		7/8/9	Sophia Fiore			Sophia Fiore	07/01/24	19/19	12/19	1/19	0/19	6/19	0/0	Safety		
14	Weekly Safety Inspection Report 6/24/24	Closed	06/26/24	06/28/24	7/8/9	Chris Malles	New England Construction Co., Inc.		Chris Malles	06/28/24	19/19	10/19	4/19	0/19	5/19	0/0	Safety		
13	Weekly Safety Inspection Report 6/17/24 Malles	Closed	06/21/24	06/22/24	7/8/9	Chris Malles	New England Construction Co., Inc.		Chris Malles	06/22/24	19/19	13/19	3/19	0/19	3/19	0/0	Safety		
12	Weekly Safety Inspection Report- 6/21	Closed	06/19/24		7/8/9	Sophia Fiore			Sophia Fiore	06/20/24	19/19	15/19	1/19	0/19	3/19	0/0	Safety		
11	Weekly Safety Inspection Report for 6/14	Closed	06/14/24		7/8/9	Sophia Fiore			Sophia Fiore	06/14/24	19/19	11/19	3/19	0/19	5/19	0/0	Safety		
10	Weekly Safety Inspection Report	Closed	06/13/24			Nichole Henderson			Nichole Henderson	06/13/24	19/19	17/19	0/19	0/19	2/19	0/0	Safety		
9	Weekly Safety Inspection Report week of 6/10/24	Closed	06/12/24	06/14/24	7/8/9	Chris Malles			Chris Malles	06/17/24	18/19	12/19	2/19	0/19	4/19	0/0	Safety		
8	Weekly Safety Inspection Report 6/3/24 halls 7,8,9	Closed	06/05/24	06/07/24	7/8/9	Chris Malles John Preston			Chris Malles	06/07/24	19/19	14/19	3/19	0/19	2/19	0/0	Safety		
7	Weekly Safety Inspection Report- Sophia	Closed	06/04/24	06/07/24	7/8/9	Sophia Fiore			Sophia Fiore	06/07/24	19/19	13/19	3/19	0/19	3/19	0/0	Safety		
6	Weekly Safety Inspection Report	Closed	05/30/24	05/06/24		Mallory Silvia			Mallory Silvia	05/30/24	19/19	17/19	0/19	0/19	2/19	0/0	Safety		
5	Weekly Safety Inspection Report 5.27.24	Closed	05/29/24		7/8/9	Chris Malles			Chris Malles	06/01/24	19/19	15/19	2/19	0/19	2/19	0/0	Safety		
4	Weekly Safety Inspection Report	Closed	05/28/24			Nichole Henderson			Nichole Henderson	05/28/24	19/19	16/19	0/19	0/19	3/19	0/0	Safety		
3	Weekly Safety Inspection Report	Closed	05/23/24	05/30/24		Mallory Silvia Chris Malles John Preston			Mallory Silvia	05/23/24	19/19	15/19	0/19	0/19	4/19	0/0	Safety		
2	Weekly Safety Inspection Report week of 5/20/24 Malles	Closed	05/22/24	05/24/24	7/8/9	Chris Malles			Chris Malles	05/24/24	19/19	14/19	3/19	0/19	2/19	0/0	Safety		



#	Description	Status	Inspection Date	Due Date	Location	Assignees	Responsible Contractor	Signers	Closed By	Date Closed	Items Inspected	✓	×	●	N/A	Closed Observations	Type	Trade	Spec Section
1	Weekly Safety Inspection Report	Closed	05/16/24			John Preston			Chris Malles	06/05/24	0/19	0/19	0/19	0/19	0/19	0/0	Safety		



New England Construction Co., Inc.  
293 Bourne Ave  
Rumford, Rhode Island 02916  
P: +14014340112

Project: 24-004-000 Bryant Village- Building 7,8,9  
1150 Douglas Pike  
Smithfield , Rhode Island 02917

## OAC Meeting Minutes: Meeting #8

**Meeting Date** Jun 6, 2024 **Meeting Time** 1:30 PM - 2:30 PM Eastern Time (US & Canada)

**Meeting Location**

**Overview** Weekly Meeting to discuss the general progress and open items for the project.

**Notes**

**Attachments** [Bryant 2024 Meeting Packet 6.6.24.pdf](#)

### Scheduled Attendees

Name	Company	Phone Number	Email	Attendance
Christopher Pitman	CBT Architects	P: (617) 262-4354	pitman@cbtarchitects.com	Present
Adam Arsenault	New England Construction Co., Inc.	P: (401) 434-0112	aarsenault@neconstruction.com	Absent
Christopher Flynn	New England Construction Co., Inc.	P: (401) 434-0112	cflynn@neconstruction.com	Present
Luke Grady	New England Construction Co., Inc.	P: (401) 434-0112	lgrady@neconstruction.com	Absent
Nichole Henderson	New England Construction Co., Inc.	P: (401) 434-0112	nhenderson@neconstruction.com	Present
Chris Malles	New England Construction Co., Inc.	P: (401) 434-0112	cmalles@neconstruction.com	Present
Corey Riendeau	New England Construction Co., Inc.	P: (401) 434-0112	criendeau@neconstruction.com	Present
Eric Riendeau	New England Construction Co., Inc.	P: (401) 434-0112	eriendeau@neconstruction.com	Absent
Mallory Silvia	New England Construction Co., Inc.	P: (401) 434-0112	msilvia@neconstruction.com	Present

### Safety/Site Logistics

No.	Mtg Origin	Title	Assignment	Due Date	Priority	Status
1.1	1	Safety Items				Open
		<b>Description</b> This section is to track and discuss all site safety issues.				
		<b>Official Documented Meeting Minutes</b> <ul style="list-style-type: none"><li>• Joe T. on site today</li><li>• Making sure trenches are safe and drains are protected</li><li>• Ground floor lighting - Increase temp. light.</li></ul>				

**Previous Meeting Minutes****May 30, 2024**

- Tying in Cryan sewer
- Extra fencing on site if needed
- United fence delivered yesterday
- Scrim delivered
- Interior trenches open
- Shafts are starting to get infilled
- Trench boxes being used

**May 23, 2024**

- Cryan is working out back and has the back door closed off.
- And trucks backing into the site need a spotter.
- Cones and fencing being utilized for sitework.
- TT requested we put cones by the hydrant near the fisher center by the edge of the walkway.
- NEC's safety guy has been onsite reviewing utilities to makesafe the remainder of the sawcutting.
- CM to send TT PTA's (checklist for activities & risk, with steps to mitigate)
- Trench Boxes are being used.
- Protecting open shafts in the building.

No.	Mtg Origin	Title	Assignment	Due Date	Priority	Status
1.2	1	Site Logistics				Open
<b>Description</b> This section is to discuss all site logistics.						
<b>Official Documented Meeting Minutes</b> <ul style="list-style-type: none"> <li>• Path walk reviewed this week.</li> <li>• Sewer and storm in - front of building 7, last sitework activity.</li> <li>• Irrigation turned back on.</li> </ul>						
<b>Previous Meeting Minutes</b> <b>May 30, 2024</b> <ul style="list-style-type: none"> <li>• Cones + Caution tape in place.</li> <li>• Power turned on 5/31</li> <li>• Water 6/3</li> </ul>						
<b>May 23, 2024</b> <ul style="list-style-type: none"> <li>• Porta jons are being place at the south side of B7.               <ul style="list-style-type: none"> <li>◦ TT requested skim be hung on the fences around the porta jons.</li> </ul> </li> </ul>						

**Submittals**

No.	Mtg Origin	Title	Assignment	Due Date	Priority	Status
2.1	1	Submittals				Open
<b>Description</b> This section is to discuss all Submittals. Please see attached Submittal Log for reference.						

**Official Documented Meeting Minutes**

- Cryan Landscaping open.

**Previous Meeting Minutes****May 30, 2024**

- Still need a few cutsheets from Cryan.

**May 23, 2024**

- Requested a few submittals from Cryan.
- Cryan's initial package was approved.

**RFIs**

No.	Mtg Origin	Title	Assignment	Due Date	Priority	Status
3.1	1	RFIs				Open
<b>Description</b> This section is to discuss all RFIs. Please see attached RFI Log for reference.						
<b>Official Documented Meeting Minutes</b> <ul style="list-style-type: none"> <li>• No new formal RFIs.</li> </ul>						
<b>Previous Meeting Minutes</b> <b>May 30, 2024</b> <ul style="list-style-type: none"> <li>• No new RFIs.</li> <li>• Found the sewer 10ft off from plans.</li> </ul>						
<b>May 23, 2024</b> <ul style="list-style-type: none"> <li>• No open RFI's.</li> </ul>						

**Change Management**

No.	Mtg Origin	Title	Assignment	Due Date	Priority	Status
4.1	1	Change Order Requests				Open
<b>Description</b> This section is to discuss all Change Order Requests. Please attached Change Order Request Log for reference.						
<b>Official Documented Meeting Minutes</b> <ul style="list-style-type: none"> <li>• No new change orders.</li> <li>• Waiting on Cryan for price of extra excavation.</li> </ul>						
<b>Previous Meeting Minutes</b> <b>May 30, 2024</b> <ul style="list-style-type: none"> <li>• Getting price for Cryan for extra excavation.</li> </ul>						

**May 23, 2024**

- Potential CO with unforeseen ledge found by the exit of B6.
  - Cryan is still trying to find the line.

**Billing**

No.	Mtg Origin	Title	Assignment	Due Date	Priority	Status
5.1	1	Billing Status				Open
<b>Description</b> This section is to discuss all Project Billing items.						
<b>Official Documented Meeting Minutes</b> <ul style="list-style-type: none"> <li>• June bill will be ready to submit at EOM.</li> </ul>						
<b>Previous Meeting Minutes</b> <b>May 30, 2024</b> <ul style="list-style-type: none"> <li>• Revising June bill for when that comes.</li> </ul>						
<b>May 23, 2024</b> <ul style="list-style-type: none"> <li>• No billing updates.</li> </ul>						

**Schedule**

No.	Mtg Origin	Title	Assignment	Due Date	Priority	Status
6.1	1	Material Status				Open
<b>Description</b> This section is to discuss the material status report. Please see attached respective report for reference.						
<b>Official Documented Meeting Minutes</b> <ul style="list-style-type: none"> <li>• Everything on schedule.</li> <li>• Shower seats showed up yesterday.</li> </ul>						
<b>Previous Meeting Minutes</b> <b>May 30, 2024</b> <ul style="list-style-type: none"> <li>• Millwork - all fabricated.</li> <li>• Shower seats being delivered next week.</li> <li>• Drywall for Building 9 being delivered today.</li> <li>• FRP delivery next week.</li> <li>• Showers being delivered 5/31.</li> <li>• DJB delivering tile/mudset 5/31.</li> </ul>						
<b>May 23, 2024</b> <i>(None)</i>						



No.	Mtg Origin	Title	Assignment	Due Date	Priority	Status
6.2	1	Schedule and Material Status Report				Open
<b>Description</b> This section is to discuss the (3) three week look ahead & master construction schedule. Please see attached respective reports for reference.						
<b>Official Documented Meeting Minutes</b> <ul style="list-style-type: none"><li>• Building 7 - Sprinkler heads relocated , rough plumbing in buildings 7 and 9 tested and passed.</li><li>• Firestop testing tomorrow morning.</li><li>• Boarding walls in Building 7 and 9.</li><li>• Shower install should be done Saturday in buildings 7 and 9.</li><li>• Building 7 and 9 have taping starting 6/10.</li><li>• Flooring starting Monday.<ul style="list-style-type: none"><li>◦ Three step flooring system.</li><li>◦ Rep will be onsite 6/12-6/13, inspect mudset/waterproofing.</li></ul></li><li>• Ground floor - pour slab in buildings 8 and 9 end of next week.<ul style="list-style-type: none"><li>◦ Backfill Wednesday.</li><li>◦ Pour Thursday.</li><li>◦ Floorcutting where we saw cut on the ground floor.</li><li>◦ Jesmac to start infill.</li></ul></li><li>• Enviroclean finished this week.</li><li>• Jesmac cutting back part of wall that endured water damage.</li><li>• Reminder- High grade/Above grade - Run conduit through drop ceiling.</li><li>• Masons infilling shafts in building 9.</li></ul>						
<b>Previous Meeting Minutes</b> <b>May 30, 2024</b> <ul style="list-style-type: none"><li>• Building 7<ul style="list-style-type: none"><li>◦ Shaft work upper floors in progress.</li><li>◦ Bringing water lines to showers/sinks.</li><li>◦ Finishing shaft/in wall work by end of week.</li><li>◦ Passed electrical inspection.</li><li>◦ Firestopping after plumbing inspection.</li><li>◦ In wall framing inspection today</li><li>◦ Tony - Plumb. engineer wants to see in-wall , Masonry infill to follow.</li><li>◦ TT - store added stock in other trailer.</li><li>◦ Ground floor - excavation today , about a week of underground work.<ul style="list-style-type: none"><li>▪ Concrete- dowel into slab - pour mid June</li></ul></li><li>◦ TT- CM to let him know where concrete is coming into the buildings , protect windows.</li></ul></li><li>• Building 8<ul style="list-style-type: none"><li>◦ Four day lag on building 7</li><li>◦ Starting plumbing 5/31</li><li>◦ 1st floor excavation finished.</li></ul></li><li>• Building 9<ul style="list-style-type: none"><li>◦ Shaft in wall 95% done.</li><li>◦ Tying in sewer today.</li><li>◦ Waiting to backfill until civil engineer comes out.</li></ul></li></ul>						

- Water lines to showers.
- Boarding building 7/9 end of next week.

**May 23, 2024**

- All soft mob is complete.
- B7/B9 excavation done by 5/28.
  - Ready for pipe install.
- Sawcutting B8 5/28.
  - Need electrician to shut off the transformer at 7AM.
- Started setting Carrier unit in B7/B9.
- Energy One will be coring tomorrow.
- Shower deliveries next week.
- Plumbing inspections next week.
- TT noted to give the inspector 48 hours notice.
- Mason will follow the plumber with infills.
- TT emphasized Saturday work
  - CM to send TT list of workers and tasks for Saturday.

**Action Item List**

No.	Mtg Origin	Title	Assignment	Due Date	Priority	Status
7.1	1	Action Items				Open
<b>Description</b> This section is to review the action item list and provide updates/status of open tasks.						
<b>Official Documented Meeting Minutes</b> <ul style="list-style-type: none"> <li>• Get energy one mechanical systems out to service/get report for area that got wet on floor 2.</li> <li>• Once water main is fixed - File work order / Testing to see if it's all good and no other damage.</li> <li>• TT reminded team to watch out for steel cover plate protruding.</li> </ul>						
<b>Previous Meeting Minutes</b> <b>May 30, 2024</b> <ul style="list-style-type: none"> <li>• Saw plumbers at dining facility               <ul style="list-style-type: none"> <li>◦ TT - grab lunch and go</li> <li>◦ Not a lot of seating</li> <li>◦ CM to remind them</li> </ul> </li> <li>• Match Carpet - F2 (Mohawk/Interface)</li> <li>• Plumbers large crew on Saturday</li> <li>• CM wants Chris Pitman to possibly assist in plumbing/electrical QC to check shafts.</li> </ul>						
<b>May 23, 2024</b> <ul style="list-style-type: none"> <li>• TT wants to see the price per building after retainage on the bills.</li> </ul>						

These meeting minutes are believed to be an accurate reflection of those items discussed and the conclusions that were reached during the referenced meeting.  
 Please contact New England Construction Co., Inc. if there are any discrepancies or questions with the content of these minutes.

# Pre Task Analysis (PTA)



Project Name: \_\_\_\_\_  
Nearest Hospital: \_\_\_\_\_  
Superintendent/Foreman : \_\_\_\_\_

Site Address: \_\_\_\_\_  
Muster Location: \_\_\_\_\_  
Competent Person: \_\_\_\_\_

Date: \_\_\_\_\_  
Project Number: \_\_\_\_\_  
Work Shift (Circle): Day Night Weekend

General Information		
	Yes	No
Is the communication plan in place and reviewed? Muster location, procedures for work completion, etc.		
Have weather conditions been considered for this task?		
Work zone protection in place? (Barriers, Signage, etc.)		
Have all employees gone through GC safety & environmental training?		
Have all areas that require "fall protection" been identified?		
Housekeeping practices in place?		
Do any of the tasks require secondary eye/face protection? (Goggles, Face Shield, Tint, etc.)		
Do any of the tasks require a respirator?		
First aid kit location:		
Has Super/Foreman reviewed remainder of work for the week?		
Material Coordination for the day has been reviewed?		

Check & List Hazards that Apply:		How Will Risk be Mitigated? EXPLAIN!!
Slips, Trips, Falls	<input type="checkbox"/>	
Pinch Points, Struck By, Caught In-between	<input type="checkbox"/>	
Confined Spaces	<input type="checkbox"/>	
Power Tool Use	<input type="checkbox"/>	
Chainsaw and or demo chop saw use	<input type="checkbox"/>	
Moving vehicles/working in roadway	<input type="checkbox"/>	
Silica Exposure	<input type="checkbox"/>	
Work around live utilities	<input type="checkbox"/>	
Low visibility/ night work	<input type="checkbox"/>	
Poor or Extreme Weather	<input type="checkbox"/>	
Trenching/excavating	<input type="checkbox"/>	
Hot Work ( Client Permit ) - 30 lb Extinguisher	<input type="checkbox"/>	
Other:	<input type="checkbox"/>	

Task Description (Check all That Apply)		Project Details (What you are Doing Today)
<input type="checkbox"/> Traffic Set Up	<input type="checkbox"/> Concrete Placement	
<input type="checkbox"/> Saw Cutting	<input type="checkbox"/> Scaffolding	
<input type="checkbox"/> Excavation	<input type="checkbox"/> Working from lift	
<input type="checkbox"/> Hoisting	<input type="checkbox"/> Material Unloading	
<input type="checkbox"/> Pipe Installation	<input type="checkbox"/> Work from High Elevation	
<input type="checkbox"/> Electrical Hazard Work	<input type="checkbox"/> Spotting Vehicles/ Equipment	
<input type="checkbox"/> Paving	<input type="checkbox"/> Steel Erection	
<input type="checkbox"/> Chainsaw Use	<input type="checkbox"/> Glazing	
<input type="checkbox"/> Welding/Grinding	<input type="checkbox"/> HVAC	
<input type="checkbox"/> Demolition	<input type="checkbox"/> Coring/ Drilling	

**EVERYONE HAS A RIGHT TO  
STOP WORK**

Crew	
Please Print and Sign your Name Below if you have been given satisfactory briefing, and a thorough knowledge of tasks to be performed.	
Print Name	Sign Name

NOTES:

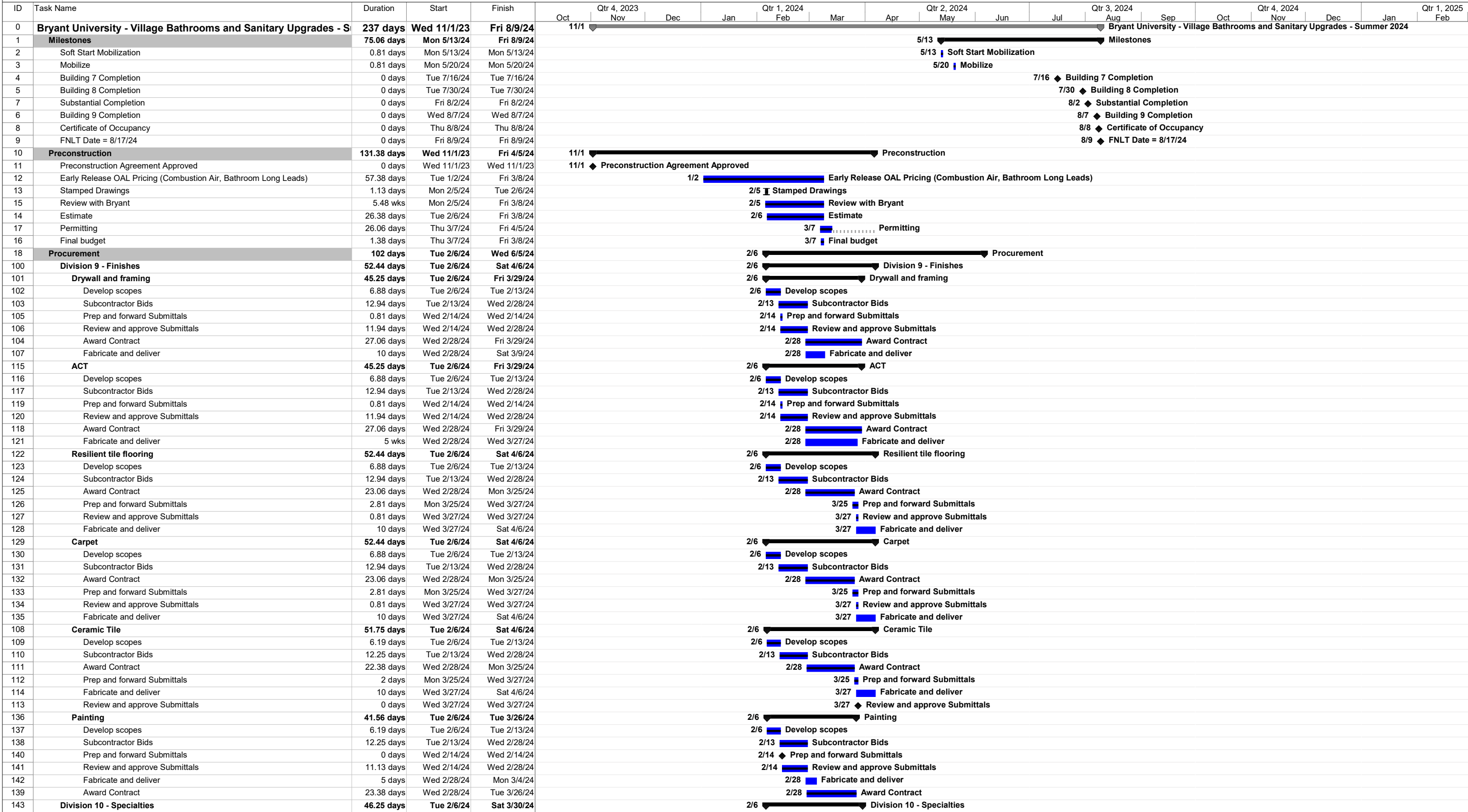
Required PPE			
<input type="checkbox"/> Hard Hat	<input type="checkbox"/> Safety Glasses	<input type="checkbox"/> Vest/ High Vis	<input type="checkbox"/> Chainsaw Chaps and Face Shield
<input type="checkbox"/> Dual eye Protection/ Face Shield	<input type="checkbox"/> Special Clothing	<input type="checkbox"/> Fire Retardant Clothing	<input type="checkbox"/> Rigging Inspections
<input type="checkbox"/> Hearing Protection	<input type="checkbox"/> Silica Dust Protection	<input type="checkbox"/> Safety Toe Boots	<input type="checkbox"/> Fall Protection
<input type="checkbox"/> Gloves/ Hand Protection Level III Cut Resistant or Greater		Other:	

Site Hazards			
<input type="checkbox"/> Poor Weather	<input type="checkbox"/> Ground Conditions, Wet , Mud, Frozen	<input type="checkbox"/> Pinch Points/ Caught In Between	<input type="checkbox"/> Live Electrical
<input type="checkbox"/> Poor Lighting	<input type="checkbox"/> Moving Equipment	<input type="checkbox"/> Parking Within Worksite	<input type="checkbox"/> Power Tools
<input type="checkbox"/> Slips, Trips, Falls	<input type="checkbox"/> Open Excavations	<input type="checkbox"/> Flammable/ Combustible Material	<input type="checkbox"/> Work within Public Roadway
Other:			

Weather Conditions			
<input type="checkbox"/> Sunny/ Partly Cloudy	<input type="checkbox"/> Cloudy/Overcast	<input type="checkbox"/> Rain/ Drizzle	<input type="checkbox"/> Heavy Rain
<input type="checkbox"/> Cold (32-59)	<input type="checkbox"/> Mild (60-75)	<input type="checkbox"/> Warm (75-90)	<input type="checkbox"/> Hot (90+)
<input type="checkbox"/> Below Freezing	<input type="checkbox"/> Snow	<input type="checkbox"/> Extreme Cold	<input type="checkbox"/> Windy
<input type="checkbox"/> Very Windy	Other:		

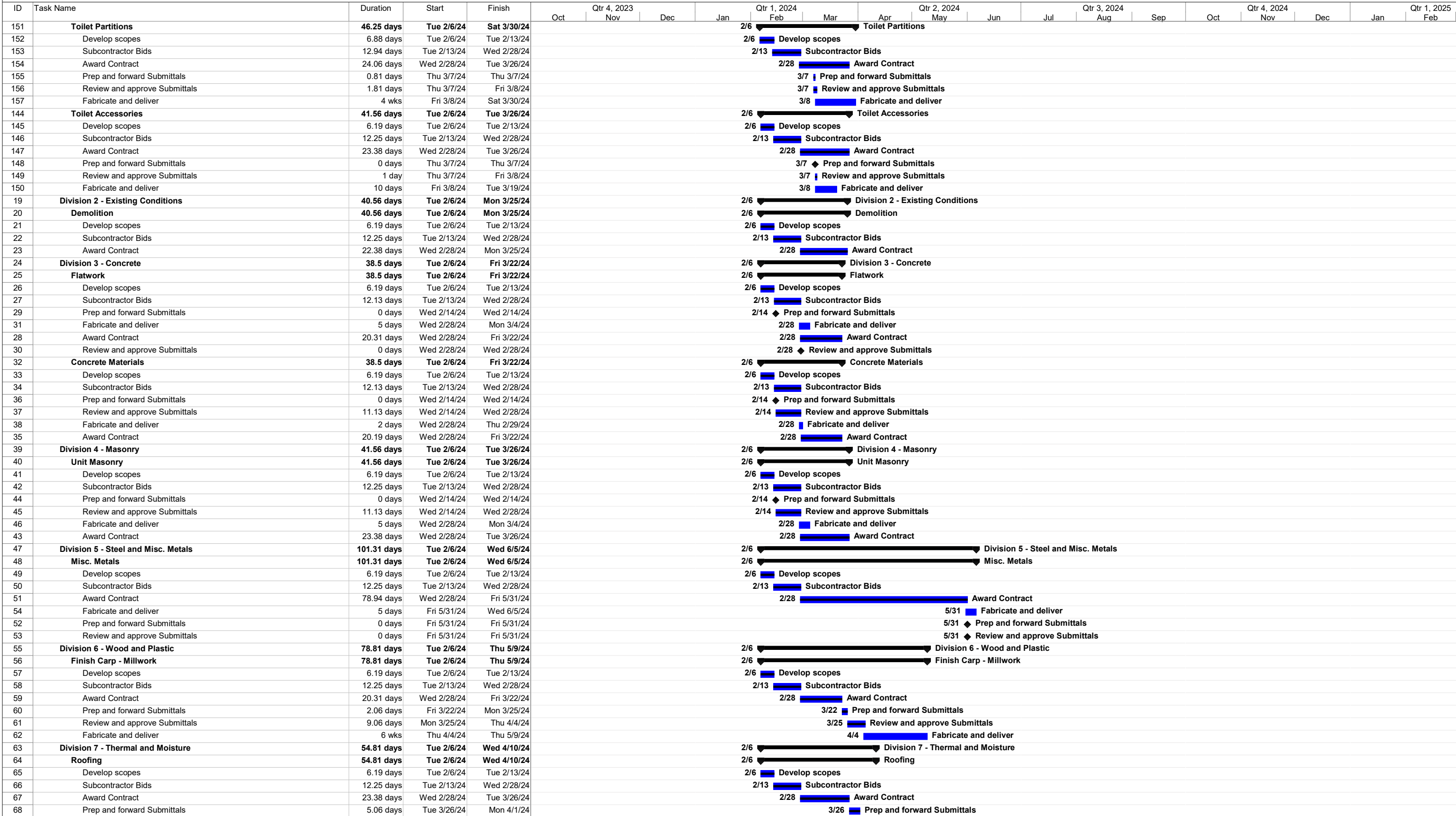
Site Mitgation Factors			
<input type="checkbox"/> Work Zone Protection barriers in place	<input type="checkbox"/> Supplemental Lighting	<input type="checkbox"/> Use of Spotters	<input type="checkbox"/> Trash Cans Around Site Used Properly
<input type="checkbox"/> Review Drawings Prior to Work Start	<input type="checkbox"/> Back Into parking Spaces	<input type="checkbox"/> Photos Taken of Work Area	<input type="checkbox"/> Guards On all power Tools
<input type="checkbox"/> Confirm Cleark Work Space	<input type="checkbox"/> Warm up to Improve Employee Mobility	<input type="checkbox"/> Properly Stored Hazardous material	<input type="checkbox"/> Scaffolding Inspected Prior To Use
<input type="checkbox"/> Fall Protection Inspected Piror to use	<input type="checkbox"/> Signed in With NEC Superintendent	<input type="checkbox"/> Muster Point Access Free and Clear	<input type="checkbox"/> Portable Toilets Available for Use

Bryant University - Village Bathrooms and Sanitary Upgrades - Summer 2024  
1150 Douglas Pike, Smithfield, RI 02917

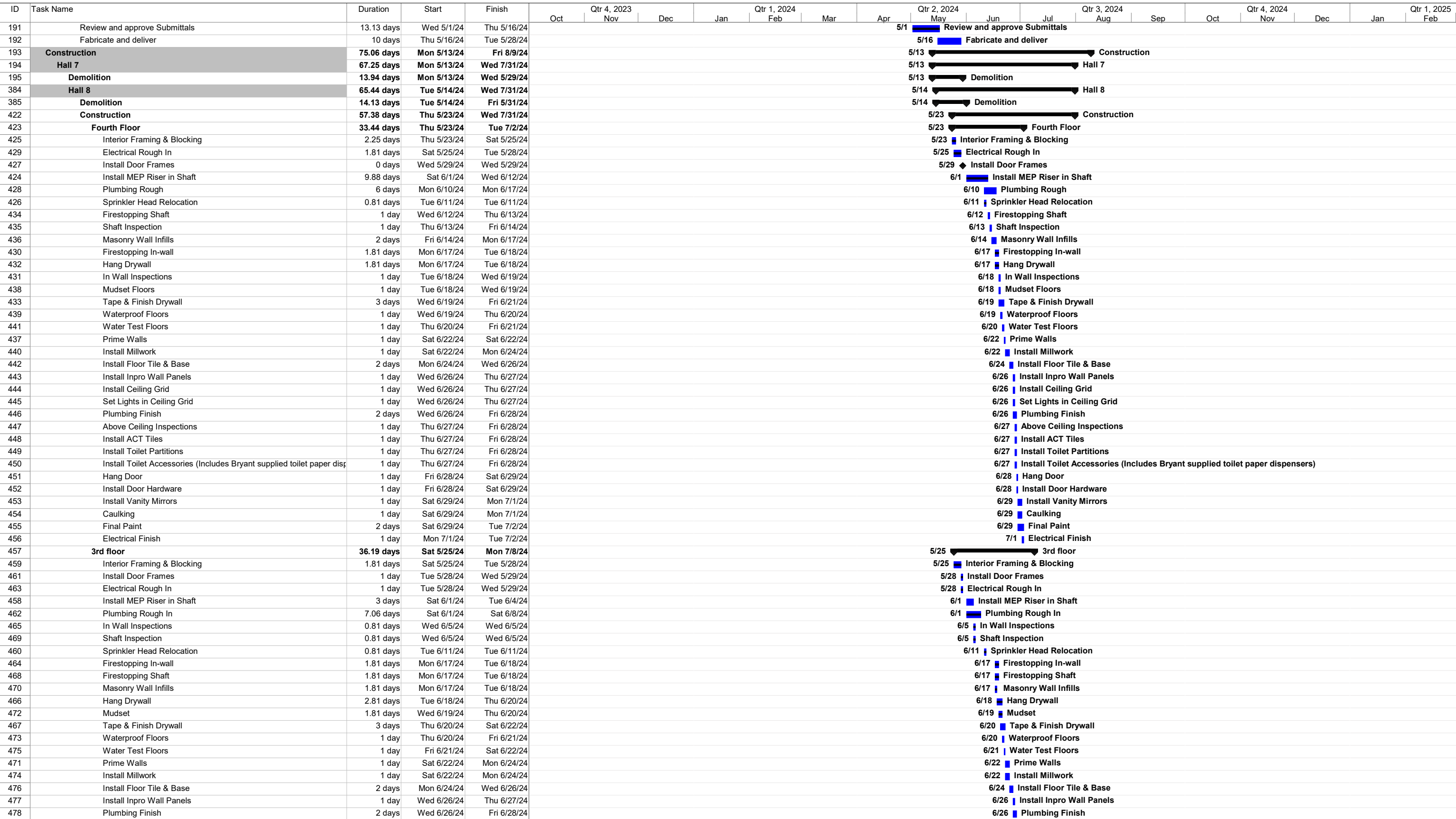
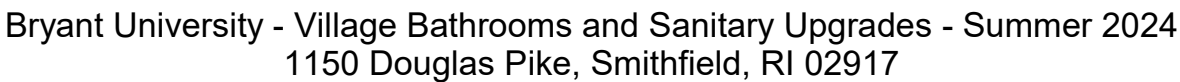




Bryant University - Village Bathrooms and Sanitary Upgrades - Summer 2024  
1150 Douglas Pike, Smithfield, RI 02917



Bryant University - Village Bathrooms and Sanitary Upgrades - Summer 2024  
 Project # Page 3 of 11  
Schedule Date: 4.11.2023  
 Revision Date: N/A  
 Schedule Type: Contract



Bryant University - Village Bathrooms and Sanitary Upgrades - Summer 2024  
1150 Douglas Pike, Smithfield, RI 02917

ID	Task Name	Duration	Start	Finish	Qtr 4, 2023			Qtr 1, 2024			Qtr 2, 2024			Qtr 3, 2024			Qtr 4, 2024			Qtr 1, 2025	
					Oct	Nov	Dec	Jan	Feb	Mar	Apr	May	Jun	Jul	Aug	Sep	Oct	Nov	Dec	Jan	Feb
479	Install Ceiling Grid	1 day	Thu 6/27/24	Fri 6/28/24										6/27	█	Install Ceiling Grid					
480	Set Lights in Ceiling Grid	1 day	Fri 6/28/24	Sat 6/29/24										6/28	█	Set Lights in Ceiling Grid					
481	Above Ceiling Inspections	1 day	Sat 6/29/24	Mon 7/1/24										6/29	█	Above Ceiling Inspections					
482	Install ACT Tiles	1 day	Sat 6/29/24	Mon 7/1/24										6/29	█	Install ACT Tiles					
483	Install Toilet Partitions	1 day	Mon 7/1/24	Tue 7/2/24										7/1	█	Install Toilet Partitions					
484	Install Toilet Accessories (Includes Bryant supplied toilet paper dispensers)	1 day	Mon 7/1/24	Tue 7/2/24										7/1	█	Install Toilet Accessories (Includes Bryant supplied toilet paper dispensers)					
485	Hang Door	1 day	Tue 7/2/24	Wed 7/3/24										7/2	█	Hang Door					
486	Install Door Hardware	1 day	Tue 7/2/24	Wed 7/3/24										7/2	█	Install Door Hardware					
487	Install Vanity Mirrors	1 day	Tue 7/2/24	Wed 7/3/24										7/2	█	Install Vanity Mirrors					
488	Caulking	1 day	Tue 7/2/24	Wed 7/3/24										7/2	█	Caulking					
489	Final Paint	2 days	Wed 7/3/24	Sat 7/6/24										7/3	█	Final Paint					
490	Electrical Finish	1 day	Sat 7/6/24	Mon 7/8/24										7/6	█	Electrical Finish					
491	2nd floor	38.44 days	Sat 5/25/24	Thu 7/11/24										5/25	▾	2nd floor					
493	Interior Framing & Blocking	2 days	Sat 5/25/24	Wed 5/29/24										5/25	█	Interior Framing & Blocking					
497	Electrical Rough In	1.81 days	Tue 5/28/24	Wed 5/29/24										5/28	█	Electrical Rough In					
495	Install Door Frames	0 days	Wed 5/29/24	Wed 5/29/24										5/29	◆	Install Door Frames					
492	Install MEP Riser in Shaft	7.06 days	Sat 6/1/24	Sat 6/8/24										6/1	█	Install MEP Riser in Shaft					
496	Plumbing Rough In	7.06 days	Sat 6/1/24	Sat 6/8/24										6/1	█	Plumbing Rough In					
499	In Wall Inspections	0.81 days	Wed 6/5/24	Wed 6/5/24										6/5	█	In Wall Inspections					
503	Shaft Inspection	0.81 days	Wed 6/5/24	Wed 6/5/24										6/5	█	Shaft Inspection					
494	Sprinkler Head Relocation	0.81 days	Tue 6/11/24	Tue 6/11/24										6/11	█	Sprinkler Head Relocation					
498	Firestopping In-wall	1.81 days	Mon 6/17/24	Tue 6/18/24										6/17	█	Firestopping In-wall					
502	Firestopping Shaft	1.81 days	Mon 6/17/24	Tue 6/18/24										6/17	█	Firestopping Shaft					
504	Masonry Wall Infills	0.81 days	Tue 6/18/24	Tue 6/18/24										6/18	█	Masonry Wall Infills					
500	Hang Drywall	1.81 days	Thu 6/20/24	Fri 6/21/24										6/20	█	Hang Drywall					
506	Mudset Floors	1 day	Fri 6/21/24	Sat 6/22/24										6/21	█	Mudset Floors					
501	Tape & Finish Drywall	3 days	Sat 6/22/24	Tue 6/25/24										6/22	█	Tape & Finish Drywall					
507	Waterproof Floors	2 days	Sat 6/22/24	Tue 6/25/24										6/22	█	Waterproof Floors					
509	Water Test Floors	1 day	Tue 6/25/24	Wed 6/26/24										6/25	█	Water Test Floors					
505	Prime Walls	2 days	Wed 6/26/24	Thu 6/27/24										6/26	█	Prime Walls					
508	Install Millwork	1 day	Fri 6/28/24	Fri 6/28/24										6/28	█	Install Millwork					
510	Install Floor Tile & Base	2 days	Sat 6/29/24	Mon 7/1/24										6/29	█	Install Floor Tile & Base					
511	Install Inpro Wall Panels	1 day	Mon 7/1/24	Tue 7/2/24										7/1	█	Install Inpro Wall Panels					
512	Install Ceiling Grid	1 day	Mon 7/1/24	Tue 7/2/24										7/1	█	Install Ceiling Grid					
513	Plumbing Finish	2 days	Mon 7/1/24	Wed 7/3/24										7/1	█	Plumbing Finish					
514	Set Lights in Ceiling Grid	1 day	Tue 7/2/24	Wed 7/3/24										7/2	█	Set Lights in Ceiling Grid					
515	Above Ceiling Inspections	1 day	Wed 7/3/24	Fri 7/5/24										7/3	█	Above Ceiling Inspections					
516	Install ACT Tiles	1 day	Wed 7/3/24	Fri 7/5/24										7/3	█	Install ACT Tiles					
517	Install Toilet Partitions	1 day	Fri 7/5/24	Sat 7/6/24										7/5	█	Install Toilet Partitions					
518	Install Toilet Accessories (Includes Bryant supplied toilet paper dispensers)	1 day	Fri 7/5/24	Sat 7/6/24										7/5	█	Install Toilet Accessories (Includes Bryant supplied toilet paper dispensers)					
519	Hang Door	1 day	Sat 7/6/24	Mon 7/8/24										7/6	█	Hang Door					
520	Install Door Hardware	1 day	Sat 7/6/24	Mon 7/8/24										7/6	█	Install Door Hardware					
521	Install Vanity Mirrors	1 day	Sat 7/6/24	Mon 7/8/24										7/6	█	Install Vanity Mirrors					
522	Caulking	1 day	Sat 7/6/24	Mon 7/8/24										7/6	█	Caulking					
523	Final Paint	2 days	Mon 7/8/24	Wed 7/10/24										7/8	█	Final Paint					
524	Electrical Finish	1 day	Wed 7/10/24	Thu 7/11/24										7/10	█	Electrical Finish					
525	1st Floor	43.06 days	Tue 6/4/24	Wed 7/24/24										6/4	▾	1st Floor					
526	Under slab MEP's	7.88 days	Tue 6/4/24	Wed 6/12/24										6/4	█	Under slab MEP's					
527	Install MEP Riser in Shaft & Connect to Underground	2.81 days	Sat 6/8/24	Tue 6/11/24										6/8	█	Install MEP Riser in Shaft & Connect to Underground					
529	Underground Inspection	1 day	Tue 6/11/24	Wed 6/12/24										6/11	█	Underground Inspection					
543	Shaft Firestopping	1 day	Tue 6/11/24	Wed 6/12/24										6/11	█	Shaft Firestopping					
530	Backfill, Compaction, & Vapor Barrier	1.81 days	Wed 6/12/24	Thu 6/13/24										6/12	█	Backfill, Compaction, & Vapor Barrier					
528	Roof Penetration and Tie In Roof Drain/ Flash Roof	2 days	Wed 6/12/24	Fri 6/14/24										6/12	█	Roof Penetration and Tie In Roof Drain/ Flash Roof					
544	Shaft Inspection	1 day	Wed 6/12/24	Thu 6/13/24										6/12	█	Shaft Inspection					
531	Drill & Epoxy Dowels	0.81 days	Thu 6/13/24	Thu 6/13/24										6/13	█	Drill & Epoxy Dowels					
545	Masonry Wall Infills	2 days	Thu 6/13/24	Sat 6/15/24										6/13	█	Masonry Wall Infills					
532	Slab Inspection	0.81 days	Fri 6/14/24	Fri 6/14/24										6/14	█	Slab Inspection					
533	Pour Concrete Slab Infills	0.81 days	Fri 6/14/24	Fri 6/14/24										6/14	█	Pour Concrete Slab Infills					
534	Interior Framing & Blocking	0 days	Fri 6/14/24	Fri 6/14/24										6/14	◆	Interior Framing & Blocking					
535	Sprinkler Head Relocation	1 day	Fri 6/14/24	Sat 6/15/24										6/14	█	Sprinkler Head Relocation					
537	Plumbing Rough In	3 days	Sat 6/15/24	Tue 6/18/24										6/15	█	Plumbing Rough In					
536	Install Door Frames	3 days	Sat 6/15/24	Wed 6/19/24										6/15	█	Install Door Frames					
538	Electrical Rough In	5 days	Thu 6/20/24	Wed 6/26/24										6/20	█	Electrical Rough In					
539	In-wall Firestopping	1 day	Wed 6/26/24	Thu 6/27/24										6/26	█	In-wall Firestopping					



Bryant University - Village Bathrooms and Sanitary Upgrades - Summer 2024

1150 Douglas Pike, Smithfield, RI 02917

ID	Task Name	Duration	Start	Finish	Oct	Qtr 4, 2023	Nov	Dec	Jan	Qtr 1, 2024	Feb	Mar	Apr	Qtr 2, 2024	May	Jun	Jul	Qtr 3, 2024	Aug	Sep	Oct	Qtr 4, 2024	Nov	Dec	Jan	Qtr 1, 2025	Feb
540	In Wall Inspections	1 day	Thu 6/27/24	Fri 6/28/24													6/27	In Wall Inspections									
541	Hang Drywall	2 days	Fri 6/28/24	Mon 7/1/24													6/28	Hang Drywall									
542	Tape & Finish Drywall	4 days	Mon 7/1/24	Sat 7/6/24													7/1	Tape & Finish Drywall									
548	Mudset	1 day	Mon 7/1/24	Tue 7/2/24													7/1	Mudset									
546	Prime Walls	1 day	Sat 7/6/24	Mon 7/8/24													7/6	Prime Walls									
547	Install Millwork	1 day	Mon 7/8/24	Tue 7/9/24													7/8	Install Millwork									
549	Install Floor Tile & Base	2 days	Tue 7/9/24	Thu 7/11/24													7/9	Install Floor Tile & Base									
550	Install Inpro Wall Panels	1 day	Thu 7/11/24	Fri 7/12/24													7/11	Install Inpro Wall Panels									
551	Plumbing Finish	2 days	Thu 7/11/24	Sat 7/13/24													7/11	Plumbing Finish									
552	Install Ceiling Grid	1 day	Fri 7/12/24	Sat 7/13/24													7/12	Install Ceiling Grid									
553	Set Lights in Ceiling Grid	1 day	Sat 7/13/24	Mon 7/15/24													7/13	Set Lights in Ceiling Grid									
554	Above Ceiling Inspections	1 day	Mon 7/15/24	Tue 7/16/24													7/15	Above Ceiling Inspections									
555	Install ACT Tiles	1 day	Tue 7/16/24	Wed 7/17/24													7/16	Install ACT Tiles									
556	Install Toilet Partitions	1 day	Wed 7/17/24	Thu 7/18/24													7/17	Install Toilet Partitions									
557	Install Toilet Accessories (Includes Bryant supplied toilet paper dispenser)	1 day	Wed 7/17/24	Thu 7/18/24													7/17	Install Toilet Accessories (Includes Bryant supplied toilet paper dispensers)									
558	Hang Door	1 day	Thu 7/18/24	Fri 7/19/24													7/18	Hang Door									
559	Install Door Hardware	1 day	Thu 7/18/24	Fri 7/19/24													7/18	Install Door Hardware									
560	Install Carpet & Resilient Flooring	3 days	Fri 7/19/24	Tue 7/23/24													7/19	Install Carpet & Resilient Flooring									
561	Install Vanity Mirrors	1 day	Fri 7/19/24	Sat 7/20/24													7/19	Install Vanity Mirrors									
562	Caulking	1 day	Sat 7/20/24	Mon 7/22/24													7/20	Caulking									
563	Final Paint	1 day	Mon 7/22/24	Tue 7/23/24													7/22	Final Paint									
564	Reinstallation & Final Connections of Water Storage Tanks (Filling & Testing)	1 day	Tue 7/23/24	Wed 7/24/24													7/23	Reinstallation & Final Connections of Water Storage Tanks (Filling & Testing)									
565	Electrical Finish	1 day	Tue 7/23/24	Wed 7/24/24													7/23	Electrical Finish									
566	Full building close-out	10 days	Fri 7/19/24	Wed 7/31/24													7/19	Full building close-out									
569	Reinstall Doors	2 days	Fri 7/19/24	Mon 7/22/24													7/19	Reinstall Doors									
567	Reinstall Furniture	3 days	Tue 7/23/24	Fri 7/26/24													7/23	Reinstall Furniture									
568	Install Steel Angles at Laundry Room	1 day	Tue 7/23/24	Wed 7/24/24													7/23	Install Steel Angles at Laundry Room									
570	Final Cleaning (Repositioning furniture, Bryant Final Cleaning Checklist, Demo Protection)	3 days	Fri 7/26/24	Tue 7/30/24													7/26	Final Cleaning (Repositioning furniture, Bryant Final Cleaning Check List, Demo Protection)									
571	100% NFPA-72 Fire Alarm Testing	1 day	Tue 7/30/24	Wed 7/31/24													7/30	100% NFPA-72 Fire Alarm Testing									
233	Construction	47.44 days	Sat 5/18/24	Mon 7/15/24										5/18													
234	Fourth Floor	39.56 days	Sat 5/18/24	Fri 7/5/24										5/18													
236	Interior Framing & Blocking	2.06 days	Sat 5/18/24	Tue 5/21/24										5/18													
240	Electrical Rough In	4 days	Mon 5/20/24	Fri 5/24/24										5/20													
238	Install Door Frames	1.06 days	Tue 5/21/24	Wed 5/22/24										5/21													
235	Install MEP Riser in Shaft	4.88 days	Wed 5/22/24	Tue 5/28/24										5/22													
239	Plumbing Rough In	5.88 days	Thu 5/23/24	Thu 5/30/24										5/23													
237	Sprinkler Head Relocation	0.81 days	Mon 6/3/24	Mon 6/3/24										6/3													
242	In Wall Inspections	0.81 days	Tue 6/4/24	Tue 6/4/24										6/4													
241	Firestopping In-wall	0.81 days	Thu 6/6/24	Thu 6/6/24										6/6													
247	Shaft Inspection	0.81 days	Fri 6/7/24	Fri 6/7/24										6/7													
243	Install Showers	2.81 days	Sat 6/8/24	Tue 6/11/24										6/8													
244	Hang Drywall	1.81 days	Mon 6/10/24	Tue 6/11/24										6/10													
246	Firestopping Shaft	0.81 days	Mon 6/10/24	Mon 6/10/24										6/10													
248	Masonry Wall Infills	0.81 days	Mon 6/10/24	Mon 6/10/24										6/10													
250	Mudset Floors	1.81 days	Wed 6/12/24	Thu 6/13/24										6/12													
245	Tape & Finish Drywall	5.88 days	Thu 6/13/24	Wed 6/19/24										6/13													
251	Waterproof Floors	0.81 days	Thu 6/13/24	Thu 6/13/24										6/13													
253	Water Test Floors	1.81 days	Thu 6/13/24	Fri 6/14/24										6/13													
254	Install Floor Tile & Base	2.81 days	Sat 6/15/24	Tue 6/18/24										6/15													
258	Plumbing Finish	3 days	Tue 6/18/24	Fri 6/21/24										6/18													
252	Install Millwork	1.81 days	Wed 6/19/24	Thu 6/20/24										6/19													
255	Install Inpro Wall Panels	1.81 days	Thu 6/20/24	Fri 6/21/24										6/20													
256	Install Ceiling Grid	2.06 days	Fri 6/21/24	Sat 6/22/24										6/21													
249	Prime Walls	1.81 days	Mon 6/24/24	Tue 6/25/24										6/24													
257	Set Lights in Ceiling Grid	1 day	Mon 6/24/24	Mon 6/24/24										6/24													
259	Above Ceiling Inspections	1 day	Tue 6/25/24	Tue 6/25/24										6/25													
260	Install ACT Tiles	1 day	Tue 6/25/24	Tue 6/25/24										6/25													
261	Install Toilet Partitions	1 day	Wed 6/26/24	Wed 6/26/24										6/26													
262	Install Toilet Accessories (Includes Bryant supplied toilet paper dispensers)	1 day	Thu 6/27/24	Thu 6/27/24										6/27													
263	Hang Door	1 day	Fri 6/28/24	Fri 6/28/24										6/28													
264	Install Door Hardware	1 day	Sat 6/29/24	Sat 6/29/24										6/29													
265	Install Vanity Mirrors	1 day	Sat 6/29/24	Mon 7/1/24										6/29													
266	Caulking	1 day	Sat 6/29/24	Mon 7/1/24										6/29													
267	Final Paint	2 days	Mon 7/1/24	Wed 7/3/24										7/1													



Bryant University - Village Bathrooms and Sanitary Upgrades - Summer 2024  
1150 Douglas Pike, Smithfield, RI 02917

ID	Task Name	Duration	Start	Finish	Oct	Qtr 4, 2023 Nov	Dec	Jan	Qtr 1, 2024 Feb	Mar	Apr	Qtr 2, 2024 May	Jun	Jul	Qtr 3, 2024 Aug	Sep	Oct	Qtr 4, 2024 Nov	Dec	Jan	Qtr 1, 2025 Feb
268	Electrical Finish	1 day	Wed 7/3/24	Fri 7/5/24										7/3							
269	Third Floor	38.5 days	Tue 5/21/24	Sat 7/6/24								5/21									
271	Interior Framing & Blocking	2 days	Tue 5/21/24	Thu 5/23/24								5/21									
273	Install Door Frames	0 days	Thu 5/23/24	Thu 5/23/24								5/23									
275	Electrical Rough In	1 day	Thu 5/23/24	Fri 5/24/24								5/23									
270	Install MEP Riser in Shaft	2 days	Sat 5/25/24	Wed 5/29/24								5/25									
274	Plumbing Rough In	1 day	Wed 5/29/24	Thu 5/30/24								5/29									
280	Firestopping Shaft	1.81 days	Mon 6/3/24	Tue 6/4/24								6/3									
277	In Wall Inspections	0.81 days	Tue 6/4/24	Tue 6/4/24								6/4									
276	Firestopping In-wall	0.81 days	Thu 6/6/24	Thu 6/6/24								6/6									
272	Sprinkler Head Relocation	0.81 days	Mon 6/10/24	Mon 6/10/24								6/10									
278	Hang Drywall	2 days	Mon 6/10/24	Wed 6/12/24								6/10									
282	Masonry Wall Infills	0.81 days	Tue 6/11/24	Tue 6/11/24								6/11									
281	Shaft Inspection	0.81 days	Wed 6/12/24	Wed 6/12/24								6/12									
284	Mudset Floors	0.81 days	Wed 6/12/24	Wed 6/12/24								6/12									
285	Waterproof Floors	0.81 days	Thu 6/13/24	Thu 6/13/24								6/13									
279	Tape & Finish Drywall	5.88 days	Fri 6/14/24	Thu 6/20/24								6/14									
287	Water Test Floors with Rep	1.81 days	Mon 6/17/24	Tue 6/18/24								6/17									
288	Install Floor Tile & Base	1.81 days	Tue 6/18/24	Wed 6/19/24								6/18									
286	Install Millwork	1.81 days	Wed 6/19/24	Thu 6/20/24								6/19									
292	Plumbing Finish	2 days	Wed 6/19/24	Fri 6/21/24								6/19									
289	Install Inpro Wall Panels	2.06 days	Fri 6/21/24	Sat 6/22/24								6/21									
290	Install Ceiling Grid	1.81 days	Sat 6/22/24	Mon 6/24/24								6/22									
283	Prime Walls	1.81 days	Mon 6/24/24	Tue 6/25/24								6/24									
291	Set Lights in Ceiling Grid	1 day	Mon 6/24/24	Tue 6/25/24								6/24									
293	Above Ceiling Inspections	1 day	Tue 6/25/24	Wed 6/26/24								6/25									
294	Install ACT Tiles	1 day	Wed 6/26/24	Thu 6/27/24								6/26									
295	Install Toilet Partitions	1 day	Thu 6/27/24	Fri 6/28/24								6/27									
296	Install Toilet Accessories (Includes Bryant supplied toilet paper dispen	1 day	Thu 6/27/24	Fri 6/28/24								6/27									
297	Hang door	1 day	Fri 6/28/24	Sat 6/29/24								6/28									
298	Install Door Hardware	1 day	Fri 6/28/24	Sat 6/29/24								6/28									
299	Install Vanity Mirrors	1 day	Fri 6/28/24	Sat 6/29/24								6/28									
300	Caulking	1 day	Fri 6/28/24	Sat 6/29/24								6/28									
301	Final Paint	2 days	Sat 6/29/24	Tue 7/2/24								6/29									
302	Electrical finish	1 day	Fri 7/5/24	Sat 7/6/24										7/5							
303	2nd Floor	38.5 days	Wed 5/22/24	Mon 7/8/24								5/22									
305	Interior Framing & Blocking	2 days	Wed 5/22/24	Fri 5/24/24								5/22									
307	Install Door Frames	1.25 days	Fri 5/24/24	Sat 5/25/24								5/24									
309	Electrical Rough In	0 days	Fri 5/24/24	Fri 5/24/24								5/24									
304	Install MEP Riser in Shaft	2 days	Tue 5/28/24	Thu 5/30/24								5/28									
308	Plumbing Rough In	2.81 days	Sat 6/1/24	Tue 6/4/24								6/1									
311	In Wall Inspections	0.81 days	Tue 6/4/24	Tue 6/4/24								6/4									
310	Firestopping In-wall	0.81 days	Thu 6/6/24	Thu 6/6/24								6/6									
314	Firestopping Shaft	0.81 days	Thu 6/6/24	Thu 6/6/24								6/6									
306	Sprinkler Head Relocation	0.81 days	Mon 6/10/24	Mon 6/10/24								6/10									
312	Hang Drywall	1.81 days	Tue 6/11/24	Wed 6/12/24								6/11									
315	Shaft Inspection	0.81 days	Wed 6/12/24	Wed 6/12/24								6/12									
316	Masonry Wall Infills	0.81 days	Wed 6/12/24	Wed 6/12/24								6/12									
318	Mudeset Floors	2.81 days	Thu 6/13/24	Sat 6/15/24								6/13									
313	Tape & Finish Drywall	5.88 days	Fri 6/14/24	Thu 6/20/24								6/14									
319	Waterproof Floors	1.81 days	Sat 6/15/24	Mon 6/17/24								6/15									
322	Install Floor Tile & Base	4.81 days	Sat 6/15/24	Thu 6/20/24								6/15									
321	Water Test Floors with Rep	0.81 days	Mon 6/17/24	Mon 6/17/24								6/17									
326	Plumbing Finish	3 days	Thu 6/20/24	Mon 6/24/24								6/20									
320	Install Millwork	0.81 days	Fri 6/21/24	Fri 6/21/24								6/21									
323	Install Inpro Wall Panels	1.81 days	Sat 6/22/24	Mon 6/24/24								6/22									
317	Prime Walls	1.81 days	Mon 6/24/24	Tue 6/25/24								6/24									
324	Install Ceiling Grid	1.81 days	Mon 6/24/24	Tue 6/25/24								6/24									
325	Set Lights in Ceiling Grid	1 day	Tue 6/25/24	Wed 6/26/24								6/25									
327	Above Ceiling Inspections	1 day	Wed 6/26/24	Thu 6/27/24								6/26									
328	Install ACT Tiles	1 day	Thu 6/27/24	Fri 6/28/24								6/27									
329	Install Toilet Partitions	1 day	Fri 6/28/24	Sat 6/29/24								6/28									
330	Install Toilet Accessories (Includes Bryant supplied toilet paper dispen	1 day	Fri 6/28/24	Sat 6/29/24								6/28									
331	Hang Door	1 day	Sat 6/29/24	Mon 7/1/24								6/29									

Bryant University - Village Bathrooms and Sanitary Upgrades - Summer 2024

1150 Douglas Pike, Smithfield, RI 02917

ID	Task Name	Duration	Start	Finish	Oct	Qtr 4, 2023	Nov	Dec	Jan	Qtr 1, 2024	Feb	Mar	Apr	Qtr 2, 2024	May	Jun	Jul	Qtr 3, 2024	Aug	Sep	Oct	Qtr 4, 2024	Nov	Dec	Jan	Qtr 1, 2025	Feb
332	Install Door Hardware	1 day	Sat 6/29/24	Mon 7/1/24													6/29	Install Door Hardware									
333	Install Vanity Mirrors	1 day	Sat 6/29/24	Mon 7/1/24													6/29	Install Vanity Mirrors									
334	Caulking	1 day	Sat 6/29/24	Mon 7/1/24													6/29	Caulking									
335	Final Paint	2 days	Mon 7/1/24	Wed 7/3/24													7/1	Final Paint									
336	Electrical finish	1 day	Sat 7/6/24	Mon 7/8/24													7/6	Electrical finish									
337	First Floor	37.06 days	Sat 6/1/24	Mon 7/15/24													6/1	First Floor									
338	Under slab MEP's	13.94 days	Sat 6/1/24	Mon 6/17/24													6/1	Under slab MEP's									
339	Install MEP Riser in Shaft & Connect to Underground	4.88 days	Wed 6/5/24	Mon 6/10/24													6/5	Install MEP Riser in Shaft & Connect to Underground									
346	Interior Framing & Blocking	2 days	Mon 6/10/24	Tue 6/11/24													6/10	Interior Framing & Blocking									
340	Roof Penetration and Tie In Roof Drain/ Flash Roof	2 days	Mon 6/10/24	Wed 6/12/24													6/10	Roof Penetration and Tie In Roof Drain/ Flash Roof									
354	Shaft Firestopping	1 day	Mon 6/10/24	Tue 6/11/24													6/10	Shaft Firestopping									
347	Sprinkler Head Relocation	1 day	Tue 6/11/24	Tue 6/11/24													6/11	Sprinkler Head Relocation									
355	Shaft Inspection	1 day	Tue 6/11/24	Wed 6/12/24													6/11	Shaft Inspection									
349	Plumbing Rough In	4 days	Wed 6/12/24	Sat 6/15/24													6/12	Plumbing Rough In									
350	Electrical Rough In	9 days	Wed 6/12/24	Fri 6/21/24													6/12	Electrical Rough In									
356	Masonry Wall Infills	2 days	Wed 6/12/24	Fri 6/14/24													6/12	Masonry Wall Infills									
345	Pour Concrete Slab Infills	0 days	Fri 6/14/24	Fri 6/14/24													6/14	Pour Concrete Slab Infills									
351	In-wall Firestopping	1 day	Sat 6/15/24	Mon 6/17/24													6/15	In-wall Firestopping									
342	Backfill, Compaction, & Vapor Barrier	1.81 days	Mon 6/17/24	Tue 6/18/24													6/17	Backfill, Compaction, & Vapor Barrier									
341	Underground Inspection	1 day	Mon 6/17/24	Tue 6/18/24													6/17	Underground Inspection									
352	In Wall Inspections	1 day	Mon 6/17/24	Tue 6/18/24													6/17	In Wall Inspections									
343	Drill & Epoxy Dowels	2.81 days	Tue 6/18/24	Thu 6/20/24													6/18	Drill & Epoxy Dowels									
353	Hang Drywall	2 days	Tue 6/18/24	Thu 6/20/24													6/18	Hang Drywall									
357	Tape & Finish Drywall	4 days	Wed 6/19/24	Mon 6/24/24													6/19	Tape & Finish Drywall									
344	Slab Inspection	1 day	Thu 6/20/24	Fri 6/21/24													6/20	Slab Inspection									
348	Install Door Frames	3 days	Mon 6/24/24	Wed 6/26/24													6/24	Install Door Frames									
358	Prime Walls	1 day	Mon 6/24/24	Tue 6/25/24													6/24	Prime Walls									
359	Install Millwork	1 day	Tue 6/25/24	Wed 6/26/24													6/25	Install Millwork									
360	Mud set	1 day	Wed 6/26/24	Thu 6/27/24													6/26	Mud set									
361	Install Floor Tile & Base	2 days	Thu 6/27/24	Sat 6/29/24													6/27	Install Floor Tile & Base									
362	Install Inpro Wall Panels	1 day	Sat 6/29/24	Mon 7/1/24													6/29	Install Inpro Wall Panels									
366	Plumbing Finish	3 days	Sat 6/29/24	Wed 7/3/24													6/29	Plumbing Finish									
363	Install Ceiling Grid	1 day	Mon 7/1/24	Tue 7/2/24													7/1	Install Ceiling Grid									
364	Set Lights in Ceiling Grid	1 day	Tue 7/2/24	Wed 7/3/24													7/2	Set Lights in Ceiling Grid									
365	Above Ceiling Inspections	1 day	Wed 7/3/24	Fri 7/5/24													7/3	Above Ceiling Inspections									
367	Install ACT Tiles	1 day	Fri 7/5/24	Sat 7/6/24													7/5	Install ACT Tiles									
369	Install Toilet Accessories (Includes Bryant supplied toilet paper dispen	1 day	Fri 7/5/24	Sat 7/6/24													7/5	Install Toilet Accessories (Includes Bryant supplied toilet paper dispensers)									
368	Install Toilet Partitions	1 day	Sat 7/6/24	Mon 7/8/24													7/6	Install Toilet Partitions									
372	Install Carpet & Resilient Flooring	3 days	Sat 7/6/24	Wed 7/10/24													7/6	Install Carpet & Resilient Flooring									
370	Hang Door	1 day	Mon 7/8/24	Tue 7/9/24													7/8	Hang Door									
371	Install Door Hardware	1 day	Mon 7/8/24	Tue 7/9/24													7/8	Install Door Hardware									
373	Install Vanity Mirrors	1 day	Tue 7/9/24	Wed 7/10/24													7/9	Install Vanity Mirrors									
374	Caulking	1 day	Wed 7/10/24	Thu 7/11/24													7/10	Caulking									
376	Reinstallation & Final Connections of Water Storage Tanks (Filling & T	1 day	Wed 7/10/24	Thu 7/11/24													7/10	Reinstallation & Final Connections of Water Storage Tanks (Filling & Testing)									
375	Final Paint	1 day	Thu 7/11/24	Fri 7/12/24													7/11	Final Paint									
377	Electrical Finish	1 day	Fri 7/12/24	Sat 7/13/24													7/12	Electrical Finish									
378	Install Steel Angles at Laundry Room	1 day	Sat 7/13/24	Mon 7/15/24													7/13	Install Steel Angles at Laundry Room									
379	Full building close-out	5 days	Wed 7/10/24	Tue 7/16/24													7/10	Full building close-out									
380	Reinstall Furniture	3 days	Wed 7/10/24	Sat 7/13/24													7/10	Reinstall Furniture									
383	100% NFPA-72 Fire Alarm Testing	2 days	Thu 7/11/24	Sat 7/13/24													7/11	100% NFPA-72 Fire Alarm Testing									
381	Reinstall Doors	2 days	Sat 7/13/24	Tue 7/16/24													7/13	Reinstall Doors									
382	Final Cleaning (Repositioning furniture, Bryant Final Cleaning Check List,	1 day	Mon 7/15/24	Tue 7/16/24													7/15	Final Cleaning (Repositioning furniture, Bryant Final Cleaning Check List, Remove All Temp. Protection)									
572	Hall 9 (STAND ALONE)	72.25 days	Tue 5/14/24	Thu 8/8/24													5/14	Hall 9 (STAND ALONE)									
573	Demolition (SUPERIOR STANDALONE)	13.13 days	Tue 5/14/24	Thu 5/30/24													5/14	Demolition (SUPERIOR STANDALONE)									
609	Construction	66.25 days	Thu 5/16/24	Sat 8/3/24													5/16	Construction									
610	Fourth Floor	38.31 days	Thu 5/16/24	Mon 7/1/24													5/16	Fourth Floor									
612	Interior Framing & Blocking	6.06 days	Thu 5/16/24	Thu 5/23/24													5/16	Interior Framing & Blocking									
611	Install MEP Riser in Shaft	3.06 days	Thu 5/23/24	Sat 5/25/24													5/23	Install MEP Riser in Shaft									
614	Install Door Frames	0 days	Thu 5/23/24	Thu 5/23/24													5/23	Install Door Frames									
616	Electrical Rough In	3.06 days	Thu 5/23/24	Tue 5/28/24													5/23	Electrical Rough In									
615	Plumbing Rough In	7.13 days	Fri 5/24/24	Sat 6/1/24													5/24	Plumbing Rough In									
619	Hang Drywall	6.88 days	Mon 6/3/24	Mon 6/10/24													6/3	Hang Drywall									
618	In Wall Inspections	0.81 days	Tue 6/4/24	Tue 6/4/24													6/4	In Wall Inspections									
617	Firestopping In-wall	0.81 days	Thu 6/6/24	Thu 6/6/24													6/6	Firestopping In-wall									

Bryant University - Village Bathrooms and Sanitary Upgrades - Summer 2024  
1150 Douglas Pike, Smithfield, RI 02917

ID	Task Name	Duration	Start	Finish	Oct	Qtr 4, 2023 Nov	Dec	Jan	Qtr 1, 2024 Feb	Mar	Apr	Qtr 2, 2024 May	Jun	Jul	Qtr 3, 2024 Aug	Sep	Oct	Qtr 4, 2024 Nov	Dec	Jan	Qtr 1, 2025 Feb	
621	Firestopping Shaft	0.81 days	Thu 6/6/24	Thu 6/6/24									6/6	Firestopping Shaft								
622	Shaft Inspection	0.81 days	Thu 6/6/24	Thu 6/6/24									6/6	Shaft Inspection								
623	Masonry Wall Infills	0.81 days	Thu 6/6/24	Thu 6/6/24									6/6	Masonry Wall Infills								
625	Mudset	0.81 days	Mon 6/10/24	Mon 6/10/24									6/10	Mudset								
613	Sprinkler Head Relocation	0.81 days	Tue 6/11/24	Tue 6/11/24									6/11	Sprinkler Head Relocation								
620	Tape & Finish Drywall	5.06 days	Tue 6/11/24	Sat 6/15/24									6/11	Tape & Finish Drywall								
626	Waterproof Floors	0.81 days	Wed 6/12/24	Wed 6/12/24									6/12	Waterproof Floors								
628	Water Test Floors with Rep	2 days	Wed 6/12/24	Fri 6/14/24									6/12	Water Test Floors with Rep								
627	Install Millwork	0.81 days	Fri 6/14/24	Fri 6/14/24									6/14	Install Millwork								
629	Install Floor Tile & Base	3.88 days	Fri 6/14/24	Tue 6/18/24									6/14	Install Floor Tile & Base								
624	Prime Walls	0.81 days	Mon 6/17/24	Mon 6/17/24									6/17	Prime Walls								
633	Plumbing Finish	2 days	Tue 6/18/24	Thu 6/20/24									6/18	Plumbing Finish								
630	Install Inpro Wall Panels	1.81 days	Thu 6/20/24	Fri 6/21/24									6/20	Install Inpro Wall Panels								
631	Install Ceiling Grid	1 day	Fri 6/21/24	Sat 6/22/24									6/21	Install Ceiling Grid								
632	Set Lights in Ceiling Grid	1 day	Sat 6/22/24	Mon 6/24/24									6/22	Set Lights in Ceiling Grid								
634	Above Ceiling Inspections	1 day	Mon 6/24/24	Tue 6/25/24									6/24	Above Ceiling Inspections								
635	Install ACT Tiles	1 day	Tue 6/25/24	Wed 6/26/24									6/25	Install ACT Tiles								
636	Install Toilet Partitions	1 day	Wed 6/26/24	Thu 6/27/24									6/26	Install Toilet Partitions								
637	Install Toilet Accessories (Includes Bryant supplied toilet paper dispen	1 day	Wed 6/26/24	Thu 6/27/24									6/26	Install Toilet Accessories (Includes Bryant supplied toilet paper dispensers)								
638	Hang Door	1 day	Thu 6/27/24	Fri 6/28/24									6/27	Hang Door								
639	Install Door Hardware	1 day	Thu 6/27/24	Fri 6/28/24									6/27	Install Door Hardware								
640	Install Vanity Mirrors	1 day	Thu 6/27/24	Fri 6/28/24									6/27	Install Vanity Mirrors								
641	Caulking	1 day	Thu 6/27/24	Fri 6/28/24									6/27	Caulking								
642	Final Paint	2 days	Fri 6/28/24	Mon 7/1/24									6/28	Final Paint								
643	Electrical Finish	1 day	Sat 6/29/24	Mon 7/1/24									6/29	Electrical Finish								
644	3rd floor	35.5 days	Wed 5/22/24	Wed 7/3/24								5/22	3rd floor									
646	Interior Framing& Blocking	2 days	Wed 5/22/24	Fri 5/24/24								5/22	Interior Framing& Blocking									
645	Install MEP Riser in Shaft	7.13 days	Fri 5/24/24	Sat 6/1/24								5/24	Install MEP Riser in Shaft									
648	Install Door Frames	0 days	Fri 5/24/24	Fri 5/24/24								5/24	Install Door Frames									
650	Electrical Rough In	1.25 days	Fri 5/24/24	Sat 5/25/24								5/24	Electrical Rough In									
649	Plumbing Rough In	5.06 days	Tue 5/28/24	Sat 6/1/24								5/28	Plumbing Rough In									
653	Hang Drywall	7.88 days	Sat 6/1/24	Mon 6/10/24								6/1	Hang Drywall									
652	In Wall Inspections	0.81 days	Tue 6/4/24	Tue 6/4/24								6/4	In Wall Inspections									
651	Firestopping In-wall	0.81 days	Thu 6/6/24	Thu 6/6/24								6/6	Firestopping In-wall									
655	Firestopping Shaft	0.81 days	Thu 6/6/24	Thu 6/6/24								6/6	Firestopping Shaft									
656	Shaft Inspection	0.81 days	Thu 6/6/24	Thu 6/6/24								6/6	Shaft Inspection									
657	Masonry Wall Infills	0.81 days	Fri 6/7/24	Fri 6/7/24								6/7	Masonry Wall Infills									
647	Sprinkler Head Relocation	0.81 days	Tue 6/11/24	Tue 6/11/24								6/11	Sprinkler Head Relocation									
654	Tape& Finish Drywall	3 days	Tue 6/11/24	Thu 6/13/24								6/11	Tape& Finish Drywall									
659	Mudset	2 days	Tue 6/11/24	Wed 6/12/24								6/11	Mudset									
660	Waterproof Floors	2 days	Thu 6/13/24	Fri 6/14/24								6/13	Waterproof Floors									
661	Install Millwork	2.88 days	Fri 6/14/24	Mon 6/17/24								6/14	Install Millwork									
662	Water Test Floors with Rep	0.81 days	Fri 6/14/24	Fri 6/14/24								6/14	Water Test Floors with Rep									
663	Install Floor Tile& Base	3.88 days	Fri 6/14/24	Tue 6/18/24								6/14	Install Floor Tile& Base									
658	Prime Walls	1 day	Fri 6/14/24	Fri 6/14/24								6/14	Prime Walls									
667	Plumbing Finish	2 days	Tue 6/18/24	Thu 6/20/24								6/18	Plumbing Finish									
664	Install Inpro Wall Panels	2.06 days	Fri 6/21/24	Sat 6/22/24								6/21	Install Inpro Wall Panels									
665	Install Ceiling Grid	1 day	Mon 6/24/24	Mon 6/24/24								6/24	Install Ceiling Grid									
666	Set Lights in Ceiling Grid	1 day	Tue 6/25/24	Tue 6/25/24								6/25	Set Lights in Ceiling Grid									
668	Above Ceiling Inspections	1 day	Wed 6/26/24	Wed 6/26/24								6/26	Above Ceiling Inspections									
669	Install ACT Tiles	1 day	Thu 6/27/24	Thu 6/27/24								6/27	Install ACT Tiles									
670	Install Toilet Partitions	1 day	Fri 6/28/24	Fri 6/28/24								6/28	Install Toilet Partitions									
671	Install Toilet Accessories (Includes Bryant supplied toilet paper dispen	1 day	Fri 6/28/24	Fri 6/28/24								6/28	Install Toilet Accessories (Includes Bryant supplied toilet paper dispensers)									
672	Hang Door	1 day	Sat 6/29/24	Sat 6/29/24								6/29	Hang Door									
673	Install Door Hardware	1 day	Sat 6/29/24	Sat 6/29/24								6/29	Install Door Hardware									
674	Install Vanity Mirrors	1 day	Sat 6/29/24	Sat 6/29/24								6/29	Install Vanity Mirrors									
675	Caulking	1 day	Sat 6/29/24	Sat 6/29/24								6/29	Caulking									
676	Final Paint	2 days	Sat 6/29/24	Tue 7/2/24								6/29	Final Paint									
677	Electrical Finish	1 day	Tue 7/2/24	Wed 7/3/24								7/2	Electrical Finish									
678	2nd floor	36.31 days	Thu 5/23/24	Fri 7/5/24								5/23	2nd floor									
680	Interior Framing& Blocking	1.81 days	Thu 5/23/24	Fri 5/24/24								5/23	Interior Framing& Blocking									
683	Plumbing Rough In	8.13 days	Thu 5/23/24	Sat 6/1/24								5/23	Plumbing Rough In									
679	Install MEP Riser in Shaft	7.13 days	Fri 5/24/24	Sat 6/1/24								5/24	Install MEP Riser in Shaft									
682	Install Door Frames	2.88 days	Fri 5/24/24	Tue 5/28/24								5/24	Install Door Frames									

Bryant University - Village Bathrooms and Sanitary Upgrades - Summer 2024

1150 Douglas Pike, Smithfield, RI 02917

ID	Task Name	Duration	Start	Finish	Oct	Qtr 4, 2023	Dec	Jan	Qtr 1, 2024	Mar	Apr	Qtr 2, 2024	Jun	Jul	Qtr 3, 2024	Sep	Oct	Qtr 4, 2024	Dec	Jan	Qtr 1, 2025
684	Electrical Rough In	1.81 days	Tue 5/28/24	Wed 5/29/24								5/28									
687	Hang Drywall	7.88 days	Sat 6/1/24	Mon 6/10/24								6/1									
686	In Wall Inspections	0.81 days	Tue 6/4/24	Tue 6/4/24								6/4									
685	Firestopping In-wall	0.81 days	Thu 6/6/24	Thu 6/6/24								6/6									
689	Firestopping Shaft	0.81 days	Thu 6/6/24	Thu 6/6/24								6/6									
690	Shaft Inspection	0.81 days	Thu 6/6/24	Thu 6/6/24								6/6									
691	Masonry Wall Infills	0.81 days	Mon 6/10/24	Mon 6/10/24								6/10									
681	Sprinkler Head Relocation	0.81 days	Tue 6/11/24	Tue 6/11/24								6/11									
688	Tape& Finish Drywall	3 days	Tue 6/11/24	Thu 6/13/24								6/11									
694	Waterproof Floors	1.81 days	Thu 6/13/24	Fri 6/14/24								6/13									
696	Water test Floors with Rep	1.81 days	Thu 6/13/24	Fri 6/14/24								6/13									
693	Mudset	2 days	Thu 6/13/24	Fri 6/14/24								6/13									
695	Install Millwork	2.88 days	Fri 6/14/24	Mon 6/17/24								6/14									
697	Install Floor Tile& Base	2.88 days	Fri 6/14/24	Mon 6/17/24								6/14									
692	Prime Walls	1 day	Fri 6/14/24	Fri 6/14/24								6/14									
701	Plumbing Finish	2 days	Mon 6/17/24	Wed 6/19/24								6/17									
698	Install Inpro Wall Panels	1.81 days	Sat 6/22/24	Mon 6/24/24								6/22									
699	Install Ceiling Grid	1 day	Mon 6/24/24	Tue 6/25/24								6/24									
700	Set Lights in Ceiling Grid	1 day	Tue 6/25/24	Wed 6/26/24								6/25									
702	Above Ceiling Inspections	1 day	Wed 6/26/24	Thu 6/27/24								6/26									
703	Install ACT Tiles	1 day	Wed 6/26/24	Thu 6/27/24								6/26									
704	Install Toilet Partitions	1 day	Thu 6/27/24	Fri 6/28/24								6/27									
705	Install Toilet Accessories (Includes Bryant supplied toilet paper dispen	1 day	Thu 6/27/24	Fri 6/28/24								6/27									
706	Hang Door	1 day	Fri 6/28/24	Sat 6/29/24								6/28									
707	Install Door Hardware	1 day	Fri 6/28/24	Sat 6/29/24								6/28									
708	Install Vanity Mirrors	1 day	Fri 6/28/24	Sat 6/29/24								6/28									
709	Caulking	1 day	Sat 6/29/24	Mon 7/1/24								6/29									
710	Final Paint	2 days	Sat 6/29/24	Tue 7/2/24								6/29									
711	Electrical Finish	1 day	Wed 7/3/24	Fri 7/5/24								7/3									
712	1st Floor	51.88 days	Tue 6/4/24	Sat 8/3/24								6/4									
713	Under slab MEP's	6.88 days	Tue 6/4/24	Tue 6/11/24								6/4									
718	Drill& Epoxy Dowels	0.81 days	Mon 6/10/24	Mon 6/10/24								6/10									
714	Install MEP Riser in Shaft& Connect to Underground	0.81 days	Tue 6/11/24	Tue 6/11/24								6/11									
716	Underground Inspection	0.81 days	Tue 6/11/24	Tue 6/11/24								6/11									
730	Shaft Firestopping	1 day	Tue 6/11/24	Wed 6/12/24								6/11									
717	Backfill, Compaction,& Vapor Barrier	0.81 days	Wed 6/12/24	Wed 6/12/24								6/12									
731	Shaft Inspection	1 day	Wed 6/12/24	Thu 6/13/24								6/12									
719	Rebar Slab Inspection	0.81 days	Thu 6/13/24	Thu 6/13/24								6/13									
720	Pour Concrete Slab Infills	1 day	Thu 6/13/24	Fri 6/14/24								6/13									
732	Masonry Wall Infills	2 days	Thu 6/13/24	Sat 6/15/24								6/13									
715	Roof Penetration and Tie In Roof Drain/ Flash Roof	2 days	Fri 6/14/24	Mon 6/17/24								6/14									
721	Interior Framing& Blocking	2 days	Fri 6/14/24	Mon 6/17/24								6/14									
722	Sprinkler Head Relocation	1 day	Mon 6/17/24	Tue 6/18/24								6/17									
724	Plumbing Rough In	8 days	Mon 6/17/24	Wed 6/26/24								6/17									
725	Electrical Rough In	9 days	Mon 6/17/24	Thu 6/27/24								6/17									
723	Install Door Frames	3 days	Tue 6/18/24	Fri 6/21/24								6/18									
726	In-wall Firestopping	1 day	Thu 6/27/24	Fri 6/28/24								6/27									
727	In Wall Inspections	1 day	Fri 6/28/24	Sat 6/29/24								6/28									
728	Hang Drywall	2 days	Sat 6/29/24	Tue 7/2/24								6/29									
729	Tape& Finish Drywall	4 days	Tue 7/2/24	Mon 7/8/24								7/2									
735	Mudset	2 days	Tue 7/2/24	Fri 7/5/24								7/2									
733	Prime Walls	1 day	Mon 7/8/24	Tue 7/9/24								7/8									
734	Install Millwork	2 days	Tue 7/9/24	Thu 7/11/24								7/9									
736	Install Floor Tile& Base	2 days	Thu 7/11/24	Sat 7/13/24								7/11									
737	Install Inpro Wall Panels	1 day	Sat 7/13/24	Mon 7/15/24								7/13									
741	Plumbing Finish	2 days	Sat 7/13/24	Tue 7/16/24								7/13									
738	Install Ceiling Grid	1 day	Mon 7/15/24	Tue 7/16/24								7/15									
739	Set Lights in Ceiling Grid	1 day	Tue 7/16/24	Wed 7/17/24								7/16									
740	Above Ceiling Inspections	1 day	Wed 7/17/24	Thu 7/18/24								7/17									
742	Install ACT Tiles	1 day	Thu 7/18/24	Fri 7/19/24								7/18									
743	Install Toilet Partitions	1 day	Fri 7/19/24	Sat 7/20/24								7/19									
744	Install Toilet Accessories (Includes Bryant supplied toilet paper dispen	1 day	Sat 7/20/24	Mon 7/22/24								7/20									
745	Hang Door	1 day	Mon 7/22/24	Tue 7/23/24								7/22									
746	Install Door Hardware	1 day	Tue 7/23/24	Wed 7/24/24								7/23									



Bryant University - Village Bathrooms and Sanitary Upgrades - Summer 2024  
1150 Douglas Pike, Smithfield, RI 02917

ID	Task Name	Duration	Start	Finish	Oct	Qtr 4, 2023 Nov	Dec	Jan	Qtr 1, 2024 Feb	Mar	Apr	Qtr 2, 2024 May	Jun	Jul	Qtr 3, 2024 Aug	Sep	Qtr 4, 2024 Oct	Nov	Dec	Jan	Qtr 1, 2025 Feb
747	Install Carpet& Resilient Flooring	5 days	Wed 7/24/24	Tue 7/30/24										7/24	█	Install Carpet& Resilient Flooring					
748	Install Vanity Mirrors	1 day	Tue 7/30/24	Wed 7/31/24										7/30	█	Install Vanity Mirrors					
751	Reinstallation& Final Connections of Water Storage Tanks (Filling & Testing)	1 day	Tue 7/30/24	Wed 7/31/24										7/30	█	Reinstallation& Final Connections of Water Storage Tanks (Filling & Testing)					
753	Install Steel Angles at Laundry Room	1 day	Tue 7/30/24	Wed 7/31/24										7/30	█	Install Steel Angles at Laundry Room					
749	Caulking	1 day	Wed 7/31/24	Thu 8/1/24										7/31	█	Caulking					
750	Final Paint	1 day	Thu 8/1/24	Fri 8/2/24										8/1	█	Final Paint					
752	Electrical Finish	1 day	Fri 8/2/24	Sat 8/3/24										8/2	█	Electrical Finish					
754	Full building close-out	14 days	Tue 7/23/24	Thu 8/8/24										7/23	█	Full building close-out					
756	Reinstall Doors	2 days	Tue 7/23/24	Thu 7/25/24										7/23	█	Reinstall Doors					
755	Reinstall Furniture	3 days	Tue 7/30/24	Fri 8/2/24										7/30	█	Reinstall Furniture					
757	Final Cleaning (Repositioning furniture, Bryant Final Cleaning Check List, Demo Protection)	3 days	Sat 8/3/24	Wed 8/7/24										8/3	█	Final Cleaning (Repositioning furniture, Bryant Final Cleaning Check List, Demo Protection)					
758	100% NFPA-72 Fire Alarm Testing	1 day	Wed 8/7/24	Thu 8/8/24										8/7	█	100% NFPA-72 Fire Alarm Testing					
759	Sitework	69.19 days	Sat 5/18/24	Fri 8/9/24									5/18	█		Sitework					
760	Sewer Work	24.19 days	Sat 5/18/24	Mon 6/17/24									5/18	█		Sewer Work					
761	Hall 7	24.19 days	Sat 5/18/24	Mon 6/17/24									5/18	█		Hall 7					
762	Mobilization	1 day	Sat 5/18/24	Mon 5/20/24										5/18	█	Mobilization					
763	Install Construction Fence	1 day	Sat 5/18/24	Mon 5/20/24										5/18	█	Install Construction Fence					
764	Sawcut Concrete/Asphalt	1 day	Sat 5/18/24	Mon 5/20/24										5/18	█	Sawcut Concrete/Asphalt					
765	Excavate for New Sewer Work	3 days	Fri 6/7/24	Mon 6/10/24										6/7	█	Excavate for New Sewer Work					
766	Cut & Cap Existing Sewer and Storm Lines	0.81 days	Fri 6/7/24	Fri 6/7/24										6/7	█	Cut & Cap Existing Sewer and Storm Lines					
767	Install New Sewer Main and Storm Drain from Building to Manholes	0.81 days	Mon 6/10/24	Mon 6/10/24										6/10	█	Install New Sewer Main and Storm Drain from Building to Manholes					
768	Inspections	0.81 days	Mon 6/10/24	Mon 6/10/24										6/10	█	Inspections					
769	Backfill	0.81 days	Mon 6/10/24	Mon 6/10/24										6/10	█	Backfill					
770	Install Asphalt Binder & Top Coat	3 days	Mon 6/10/24	Thu 6/13/24										6/10	█	Install Asphalt Binder & Top Coat					
771	Loam & Seed Disturbed Areas	3 days	Thu 6/13/24	Mon 6/17/24										6/13	█	Loam & Seed Disturbed Areas					
772	Hall 8	22.19 days	Sat 5/18/24	Fri 6/14/24									5/18	█		Hall 8					
773	Mobilization	1 day	Sat 5/18/24	Mon 5/20/24										5/18	█	Mobilization					
774	Install Construction Fence	1 day	Sat 5/18/24	Mon 5/20/24										5/18	█	Install Construction Fence					
775	Sawcut Concrete/Asphalt	1 day	Sat 5/18/24	Mon 5/20/24										5/18	█	Sawcut Concrete/Asphalt					
776	Excavate for New Sewer Work	0.81 days	Wed 6/5/24	Wed 6/5/24										6/5	█	Excavate for New Sewer Work					
777	Cut & Cap Existing Sewer and Storm Lines	0.81 days	Wed 6/5/24	Wed 6/5/24										6/5	█	Cut & Cap Existing Sewer and Storm Lines					
778	Install New Sewer Main and Storm Drain from Building to Manholes	0.81 days	Thu 6/6/24	Thu 6/6/24										6/6	█	Install New Sewer Main and Storm Drain from Building to Manholes					
779	Inspections	0.81 days	Thu 6/6/24	Thu 6/6/24										6/6	█	Inspections					
780	Backfill	0.81 days	Thu 6/6/24	Thu 6/6/24										6/6	█	Backfill					
781	Install Asphalt Binder & Top Coat	0.81 days	Tue 6/11/24	Tue 6/11/24										6/11	█	Install Asphalt Binder & Top Coat					
782	Loam & Seed Disturbed Areas	3 days	Tue 6/11/24	Fri 6/14/24										6/11	█	Loam & Seed Disturbed Areas					
783	Hall 9	21.19 days	Sat 5/18/24	Thu 6/13/24									5/18	█		Hall 9					
784	Mobilization	1 day	Sat 5/18/24	Mon 5/20/24										5/18	█	Mobilization					
785	Install Construction Fence	1 day	Sat 5/18/24	Mon 5/20/24										5/18	█	Install Construction Fence					
786	Sawcut Concrete/Asphalt	4 days	Sat 5/18/24	Thu 5/23/24										5/18	█	Sawcut Concrete/Asphalt					
787	Excavate for New Sewer Work	8.88 days	Tue 5/28/24	Thu 6/6/24									5/28	█		Excavate for New Sewer Work					
788	Cut & Cap Existing Sewer and Storm Lines	0.81 days	Thu 6/6/24	Thu 6/6/24										6/6	█	Cut & Cap Existing Sewer and Storm Lines					
789	Install New Sewer Main and Storm Drain from Building to Manholes	0.81 days	Thu 6/6/24	Thu 6/6/24										6/6	█	Install New Sewer Main and Storm Drain from Building to Manholes					
790	Inspections	0.81 days	Thu 6/6/24	Thu 6/6/24										6/6	█	Inspections					
791	Backfill	0.81 days	Thu 6/6/24	Thu 6/6/24										6/6	█	Backfill					
792	Install Asphalt Binder & Top Coat	0.81 days	Tue 6/11/24	Tue 6/11/24										6/11	█	Install Asphalt Binder & Top Coat					
793	Loam & Seed Disturbed Areas	2 days	Tue 6/11/24	Thu 6/13/24										6/11	█	Loam & Seed Disturbed Areas					
794	Final Inspections	15 days	Tue 7/23/24	Fri 8/9/24										7/23	█	Final Inspections					
795	Punchlist NEC	5 days	Tue 7/23/24	Mon 7/29/24										7/23	█	Punchlist NEC					
796	Punchlist Design Team	5 days	Mon 7/29/24	Sat 8/3/24										7/29	█	Punchlist Design Team					
798	Plumbing Affidavit from design team	1 day	Wed 7/31/24	Thu 8/1/24										7/31	█	Plumbing Affidavit from design team					
797	Substantial Completion	1 day	Fri 8/2/24	Sat 8/3/24										8/2	█	Substantial Completion					
799	Electrical Affidavit from design team	1 day	Sat 8/3/24	Mon 8/5/24										8/3	█	Electrical Affidavit from design team					
800	Architectural Affidavit from design team	1 day	Sat 8/3/24	Mon 8/5/24										8/3	█	Architectural Affidavit from design team					
801	Fire Dept. Final	1 day	Thu 8/8/24	Fri 8/9/24										8/8	█	Fire Dept. Final					
802	Building Dept. Final	1 day	Thu 8/8/24	Fri 8/9/24										8/8	█	Building Dept. Final					
803	Certificate of Occupancy	1 day	Thu 8/8/24	Fri 8/9/24										8/8	█	Certificate of Occupancy					
804	Project Completion	1 day	Thu 8/8/24	Fri 8/9/24										8/8	█	Project Completion					