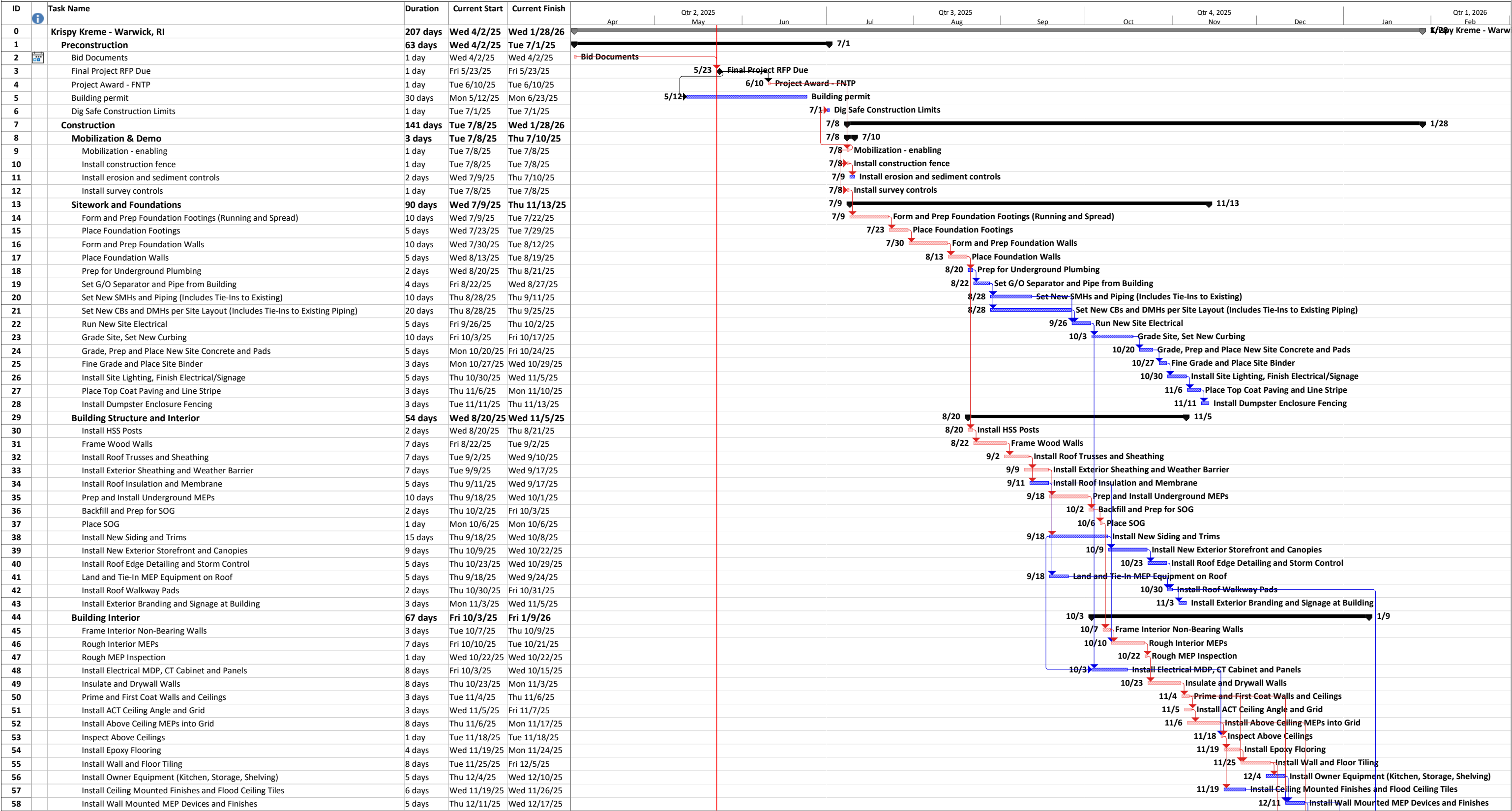


KRISPY KREME - WARWICK, RI

1 200 QUAKER LANE EAST
WARWICK RI 02818

EXHIBIT NUMBER: TBD





KRISPY KREME - WARWICK, RI

1 200 QUAKER LANE EAST

WARWICK RI 02818

EXHIBIT NUMBER: TBD

ID	Task Name	Duration	Current Start	Current Finish	Qtr 2, 2025			Qtr 3, 2025			Qtr 4, 2025			Qtr 1, 2026		
					Apr	May	Jun	Jul	Aug	Sep	Oct	Nov	Dec	Jan	Feb	
59	Coordinate and Install Production Equipment	15 days	Mon 12/8/25	Mon 12/29/25									12/8			
60	Install Bathroom Plumbing and Finishes	8 days	Mon 12/8/25	Wed 12/17/25									12/8			
61	Install Millwork, Countertops and Furniture	4 days	Tue 12/30/25	Mon 1/5/26									12/30			
62	Start-up MEP Equipment, Testing and Balancing	10 days	Thu 12/18/25	Fri 1/2/26									12/18			
63	Install Signage, Wall Finishes	3 days	Tue 1/6/26	Thu 1/8/26									1/6			
64	Final Clean Building	2 days	Thu 1/8/26	Fri 1/9/26									1/8			
65	Final Inspections, Close-out	27 days	Thu 12/18/25	Wed 1/28/26									12/18		1/28	
66	Close-out	25 days	Thu 12/18/25	Mon 1/26/26									12/18		1/26	
67	Collect O&M Manuals	5 days	Thu 12/18/25	Wed 12/24/25									12/18			
68	Punchlist Building and Sign-Off Back Punch	10 days	Mon 1/12/26	Mon 1/26/26										1/12		
69	Owner training	3 days	Fri 12/26/25	Tue 12/30/25									12/26			
70	Final Inspections	11 days	Mon 1/12/26	Tue 1/27/26									1/12		1/27	
71	Design Team Affidavits	1 day	Mon 1/12/26	Mon 1/12/26									1/12			
72	Plumbing Final	1 day	Tue 1/13/26	Tue 1/13/26									1/13			
73	Electrical Final	1 day	Tue 1/13/26	Tue 1/13/26									1/13			
74	HVAC Final	1 day	Tue 1/13/26	Tue 1/13/26									1/13			
75	Fire Dept. Final	2 days	Wed 1/14/26	Thu 1/15/26									1/14			
76	Building Dept. Final	1 day	Fri 1/16/26	Fri 1/16/26									1/16			
77	Apply for certificate of occupancy	5 days	Tue 1/20/26	Mon 1/26/26									1/20			
78	Receive Certificate of Occupancy	1 day	Tue 1/27/26	Tue 1/27/26									1/27			
79																
80	Turnover	1 day	Wed 1/28/26	Wed 1/28/26										1/28		